

# **FEED 2**

**for clarinet (in Bb) and live electronics**

**duration approx. 6'**

**supported by The Danish Arts Council**

**Morten Ladehoff 2012**

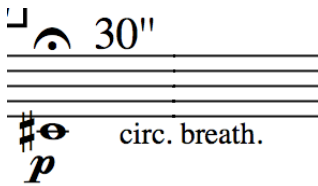
# Performance notes

**1**

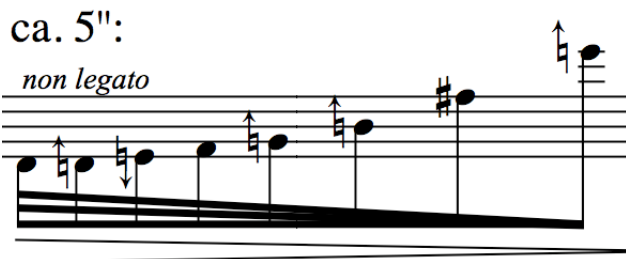
Keycontrol. Space = count forward. Return = count backwards.



Multiphonic at G-fingering. As loud and distorted as possible.



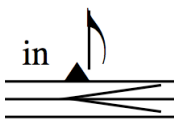
A sustained note of 30 seconds duration. Circular breathing is necessary. As smooth and steady as possible.



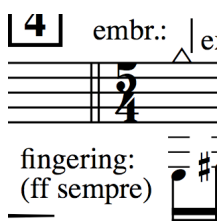
A ritardando of approx. 5 seconds duration. Non legato i.e. longer notes = longer breaks between the notes.



Exhale. Breath into the instrument without tone production.



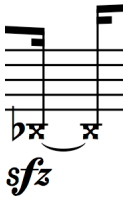
Inhale. A rather fast and loud inhalation with the mouthpiece inside the mouth. No tone is produced.



Split-technique. The upper notes shows the embouchure-actions (air/tone) and the lower notes the fingering-actions independently from each other. The fingering should be rather exaggerated and noisy with a ff-character thou the resulting dynamics is rather soft.



As above. The hard part is to get the mouth and fingers to work independently. The correct execution produces a kind of 'wrong notes'-character.



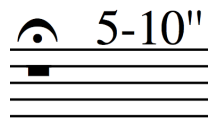
With teeth directly on the reed. Use the fingering as noted. The resulting sound is loud and noisy.



A quartertone above.



A quartertone below.



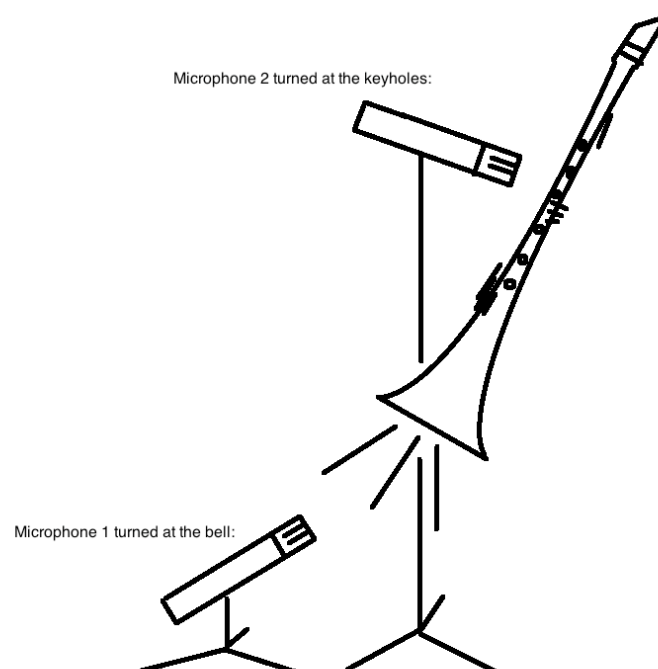
General pause of 5-10 seconds duration.

## Electronics:

Laptop with max/msp, 2 microphones (unidirectional), soundcard with min. 2 inputs, PA system.

The performer controls the electronics by hitting the space-key at the laptop-keyboard when a number occurs in the score. Every hit on the space-key increases the count (1,2,3...). If an error occurs, hit the return-key and it will count backwards for each hit (7,6,5...). The laptop should be placed on a stand right to the performer so that it can be controlled by the performers right hand. Alternately the laptop can be controlled by a second person.

## Microphone setup:



# FEED 2

Morten Ladehoff  
2012

**1**  $\text{♩} = 60$

*mp* *fff* *ord* *f* *marcato*

4

7

**2** 30" **3**

*p* circ. breath.

$\text{♩} = 90$

ca. 5": *non legato* **4** *embr.: ex* *in* *ord*

fingering: (ff sempre) *pp*

5 5 5 5 5

13 *ex* *ex* *ord*

5 5 5 5 5 5 5 5 5

15 *ex*

17 *in* *ord*

19 *in* *ex*

21 *ord*  $\text{♩} = 60$  **5** 30" *mf* *circ. breath.*

24 **6** **7** *mph* *ord* *marcato* *f* *sfz* (teeth)

28 *sfz* *sfz*

31

*sfz*

34

*sfz* *sfz*

37

*sfz* 8 30" *f* circ. breath.

silent page turn ~

ca. 5": *non legato*

40 9 10

$\text{♩} = 90$

42 *embr.:* *in* *ex* *ord*

fingering: (ff sempre) *pp*

44

$\text{♩} = 60$

46 *ex* *in* *in* *ord*

48 11 30" 12 13 *mph*

*ff* *circ. breath.* *fff*

51 *ord* *marcato* (teeth) *f* *sfz* *sfz*

54

*sfz* *sfz* *sfz* *sfz*

57

*sfz* *sfz*

60

*sfz* *sfz*

63

*sfz* *sfz* *sfz*

66

*sfz* *sfz* *sfz*

69

*sfz* *sfz* *sfz*



72

*sfz* *sfz* *sfz* *sfz*

Detailed description: This system contains measures 72 through 75. The notation is in treble clef with a key signature of one sharp (F#). Measure 72 starts with a half note G4, followed by a dotted quarter note F#4, and a quarter note E4. Measure 73 features a half note D4, a dotted quarter note C#4, and a quarter note B3. Measure 74 has a half note A3, a dotted quarter note G#3, and a quarter note F#3. Measure 75 begins with a half note E3, a dotted quarter note D#3, and a quarter note C#3. The dynamic *sfz* (sforzando) is marked at the beginning of each measure.

75

14 5-10" 15  $\text{♩} = 90$  embr.: | ex ord

fingering: (ff sempre) *pp* 5 5 5 5 5

Detailed description: This system contains measures 75 through 77. Measure 75 starts with a half note G4, followed by a dotted quarter note F#4, and a quarter note E4. Measure 76 features a half note D4, a dotted quarter note C#4, and a quarter note B3. Measure 77 has a half note A3, a dotted quarter note G#3, and a quarter note F#3. The dynamic *pp* (pianissimo) is marked at the beginning of measure 76. The fingering (5) is indicated for the first finger of each hand in every measure. Performance instructions include 'embr.: | ex' and 'ord' with accents (>) over the notes in measure 76. A tempo marking of  $\text{♩} = 90$  is shown in a box above measure 75. A box containing the number '14' is placed above measure 75, and a box containing '15' is placed above measure 76. A '5-10"' instruction is placed above measure 75.

77

ex | in

Detailed description: This system contains measures 77 through 80. Measure 77 starts with a half note G4, followed by a dotted quarter note F#4, and a quarter note E4. Measure 78 features a half note D4, a dotted quarter note C#4, and a quarter note B3. Measure 79 has a half note A3, a dotted quarter note G#3, and a quarter note F#3. Measure 80 begins with a half note E3, a dotted quarter note D#3, and a quarter note C#3. The dynamic *pp* is maintained. The fingering (5) is indicated for the first finger of each hand in every measure. Performance instructions include 'ex |' and 'in' with accents (>) over the notes in measure 77. A box containing the number '14' is placed above measure 75, and a box containing '15' is placed above measure 76.