

Tableau Vivant

for amplified guitar

duration approx. 7'30''

dedicated to Frederik Munk Larsen

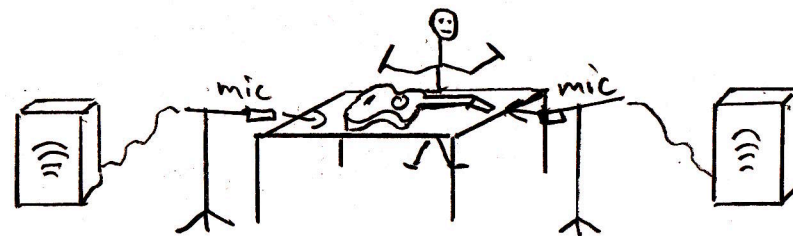
supported by the Danish Arts Foundation

Morten Ladehoff 2015

Performance notes

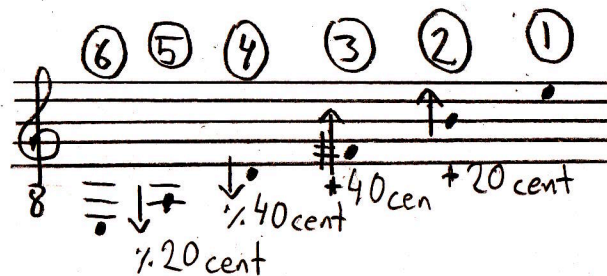
Setup

A classical guitar is placed at a table with 2 microphones – one pointing at the nut and another at the bridge. The microphone inputs are amplified in a stereosetup. The amplification should be rather loud. The performer is standing behind the table facing the audience. The performer operates the 'guitar-table' in a standing position and uses 2 metaltubes (approx 17 cm) and a custom-made damper for fret I-III.

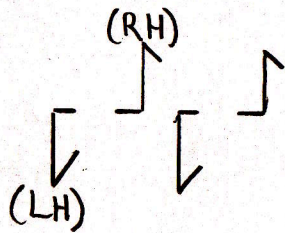


Audience

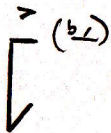
Scordatura



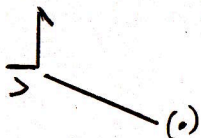
Signs



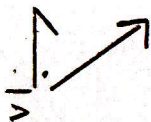
In general upstem notes are right hand actions and downstem left hand (except for the slow middle part at page 3-4).



Tap with the tube against all 6 strings. The relativ pitch-position is notated from the 6th string.



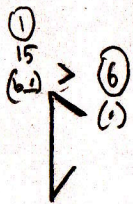
Tap and downward glissando.



Upward glissando all the way to the bridge.



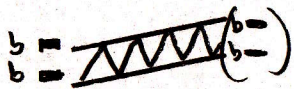
Arpeggio with the end of the tube.



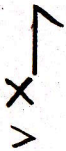
Angle the tube and tap.



Spiccato with the end of the tube (easy grip). The tube should bounce at the 1st string.



Scratch-noise. Move the end of the tube (easy grip) on string 5 and 6.



A forceful tap at alle strings near the bridge. Produces a percussive non-pitched sound.

Handwritten musical notation on a single staff. A tempo marking $\text{♩} = 90$ is enclosed in a box at the top left. The notation includes a circled '1' above a circled '6', the word 'sim.', and a box containing 'x3'. The music features eighth and sixteenth notes with various articulations and dynamics. A circled '3' is written above a triplet of notes at the end of the staff.

Handwritten musical notation on a single staff. It begins with a circled '1' above a circled '6'. The notation includes eighth and sixteenth notes with articulations and dynamics. A circled '3' is written above a triplet of notes near the end of the staff.

Handwritten musical notation on a single staff. It features a circled '1' above a circled '6' and a box containing 'x4'. The notation includes eighth and sixteenth notes with articulations and dynamics. A circled '3' is written above a triplet of notes. A tempo marking $\text{♩} = 135$ is enclosed in a box on the right side of the staff.

Handwritten musical notation on a single staff. The notation includes eighth and sixteenth notes with articulations and dynamics. A circled '6' is written below the first few notes.

Handwritten musical notation for the first staff. It features a treble clef, a key signature of one sharp (F#), and a 16/8 time signature. The notation includes various rhythmic values, accidentals, and dynamic markings like 'sfz'. A box contains the tempo marking $\text{♩} = 90$. A bracketed section is labeled 'x3'. Fingerings are indicated by circled numbers 1-6. A slur is labeled 'L.V.'.

Handwritten musical notation for the second staff. It features a treble clef, a key signature of one sharp (F#), and a 4/8 time signature. It includes complex rhythmic patterns, a 'x4' multiplier, and various accidentals.

Handwritten musical notation for the third staff. It features a treble clef, a key signature of one sharp (F#), and a 4/8 time signature. It includes a tempo marking $\text{♩} = 135$ in a box, various rhythmic patterns, and accidentals.

Handwritten musical notation for the fourth staff. It features a treble clef, a key signature of one sharp (F#), and a 6/16 time signature. It includes a 'x5' multiplier, a 'pizz (ord)' marking, and a sequence of notes numbered 1-6 with the word 'Lunga' above it. A slur is labeled 'L.V.'.

① tap with tube (RH only)
→ sempre

① sempre

acc. and expand

acc. and expand

8 M#

loco (to bridge)

sempre 8 ↑

tap with tubes (both hands)

detached - no overlap!

as fast as possible

gradually more and more breaks (LH)

rit.

rit.

rit.

spicc. (bounce) rit.

loco (b-c)

⑤ scratch gliss LH

tab (cord) RH

♩ = 90

near bridge

attaca

sfz

remove damper! LH

Handwritten musical notation on a single staff. It begins with a treble clef and a key signature of one flat. The tempo is marked with a box containing $\text{♩} = 135$. The piece consists of several measures of music, including a repeat sign. A box with $\text{♩} = 90$ is placed above a section of the music. The instruction "damp RH" is written above the staff. Another box with $\text{♩} = 135$ is placed above a later section. A final box with $\text{♩} = 90$ is placed above the concluding measures. A large arrow points from the end of the staff towards the right.

Handwritten musical notation on a single staff. It begins with a treble clef and a key signature of one flat. The tempo is marked with a box containing $\text{♩} = 135$. The instruction "damp LH" is written below the staff. The piece consists of several measures of music, including a repeat sign. A box with $\text{♩} = 90$ is placed above a section of the music. The instruction "damp RH" is written above the staff. A box with $\text{♩} = 135$ is placed above the concluding measures. Fingerings are indicated with circled numbers 1, 5, 6, and 2.

Handwritten musical notation on a single staff. It begins with a treble clef and a key signature of one flat. The tempo is marked with a box containing $\text{♩} = 90$. The piece consists of several measures of music, including a repeat sign. The instruction "damp LH" is written below the staff. A triplet of notes is indicated with a bracket and the number 3. Fingerings are indicated with circled numbers 1, 5, 6, and 2. The instruction "damp LH" is written below the staff.

Handwritten musical notation on a single staff. It begins with a treble clef and a key signature of one flat. The piece consists of a few measures of music. The instruction "damp LH" is written below the staff. Fingerings are indicated with circled numbers 1, 5, 6, and 2.

*) Tempo of repetitions :

1	♩ = 50	↓ gradual accelerando
2	♩ = 60	
3	♩ = 80	
4	♩ = 120	
5	♩ = 200	
6-11 = as fast as possible		