

# AUTOMATERIA

for 14 musicians

Morten Ladehoff 2018

Comissioned by Athelas Sinfonietta Copenhagen, Denmark

Duration approx. 17'

- Score in C -

Supported by: **DANISH ARTS FOUNDATION**



# Instrumentation:

## Flute

Oboe + *whirly tube (E) and pan-tube (custom made)*

## Bass Clarinet in Bb

Bassoon + *bassoon reed/mouthpiece, tube (ribbed cable cover)*

## Horn in F

Trumpet in Bb + *table with large (wooden) ruler, whirly tubes (E,F,F#,G)*

Trombone (*with F-attachment*)

**Percussion:** *crotales (D#,F,F#,G), china cymbal (medium size), hi-hat, long guiro (e.g. whirly tube/vacuum cleaner tube), 3 toms (low, medium, high), kick-drum, gran cassa (concert bass drum), large thundersheet*

Piano (*prepared with sticky tag*)

## Violin 1

## Violin 2

## Viola

## Violincello

## Double bass

## Dimensions of tubes:

Whirly tubes (ribbed plastic-tubes to be rotated in the air – producing harmonics):

(E): length 96 cm., Ø 3 cm.

(F): length 90 cm., Ø 3 cm.

(F#): length 85 cm., Ø 3 cm.

(G): length 82 cm., Ø 3 cm.

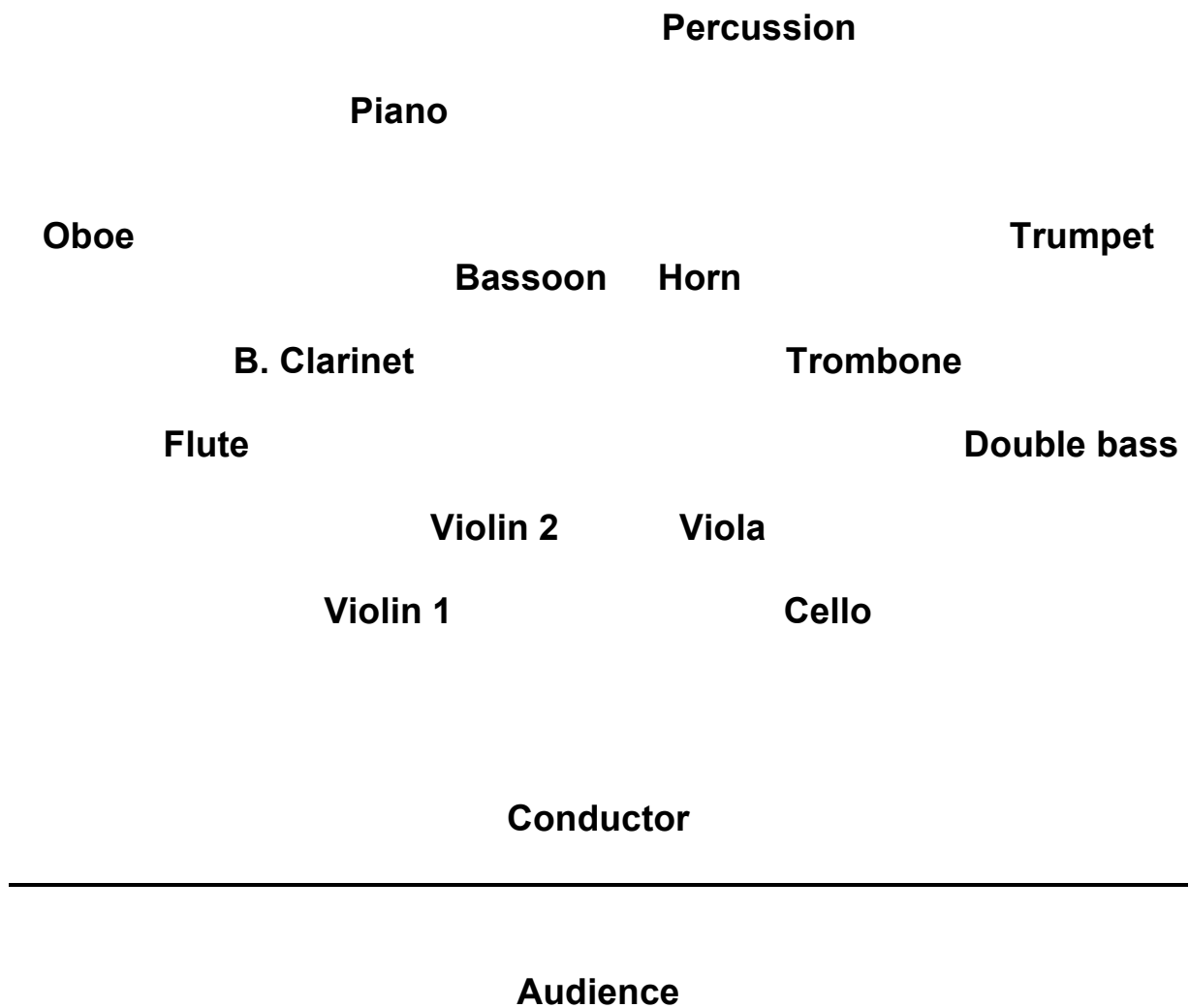
(H): length 64 cm., Ø 3 cm.

Tube (ribbed cable cover - only for the bassoon-player): length 90 cm., Ø 1,7 cm.

Pan-tube: 12 tuned tubes (lengths from approx 25 cm. to 55 cm., Ø 1,7 cm.) attached side by side like a pan-flute.

**Contact** [ladehoff5@hotmail.com](mailto:ladehoff5@hotmail.com) for more info.

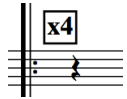
# Staging:



# Performance notes:

## All

Dynamics: Any dynamic sign is valid until a new appears. The dynamics indicate the actual sound volume – not the effort or amount of energy to put into the action. E.g. an action marked *p* could require a *ff* effort and vice versa.



Play the measure(s) 4 times all in all.



A quarter-tone sharp.



A quarter-tone flat.

## Woodwinds



Harmonics. Fundamental fingering = diamond notehead.



Air.  
*Flute: cover the mouthpiece with the lips.*



(Flute) Jet whistle.



(Flute) Whistle tone. Very weak and fragile sound – harmonic gliss.  
Fundamental fingering = diamond notehead.  
(Bassoon/tube) harmonic glissando.



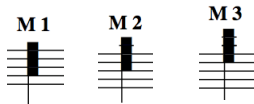
Tongue ram.  
*Clarinet: slap tone.*



Key tapping without air.



(Flute) Wind tones – more air than tone.



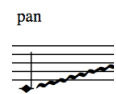
Inharmonic multiphonics. Choose 3 different multiphonics. Well responding and with a wide spectrum. Number 1 with the lowest general pitch and number 3 with the highest.



Harmonic multiphonics. Fundamental and fundamental fingering = diamond notehead.



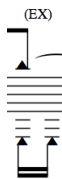
(Pan-tube) Inhale – cover the end of the tube with the lips while inhaling.



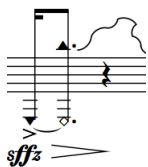
(Pan-tube) play a glissando like on a pan flute.



(Whirly tubes) Rotate in the air in a circle movement. The faster rotation the higher partial.



(Bassoon/tube) blow into the tube continuously while tapping the end with fingertip.



(Bassoon/tube) Blow into the tube while covering the end with the fingertip. Quickly remove the fingertip which releases the air-pressure.



(Bassoon/reed alone): Play on a bassoon mouthpiece/reed without the body of the instrument. Produce pitch alterations/glissandi by lip tension/placement and/or covering the end partially. The notation of pitch is arbitrary but the rhythmic values are exact.

# Brass



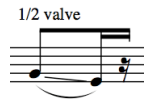
Tongue ram. Covering the mouthpiece with the lips.



Air. Covering the mouth-piece with the lips.



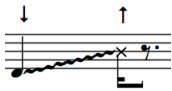
Air. Blow into the mouthpiece from a distance of 1-2 centimeters.



Half-valving. One or more valves halfway depressed. Change of timbre. Lip glissandi are made more easy.



Wawa-openings with hand (harmon-mute).



(Trumpet/ruler). Play on the ruler by placing it at the end of a small table. One hand holds it at place and adjusts the position while the other hand are plucking the tip. A small part of the ruler outside the table results in a high pitch. A large part of it outside the table results in a lower pitch. Arrow down means plucking downwards and vice versa. Cross-head note means letting the ruler clap into the table from an upward pluck.



(Whirly tubes) Rotate in the air in a circle movement. The farster rotation the higher partial.

# Percussion

- Crotales (D#, F, F#, G)
- China cymbal (medium size)
- Hi-hat
- Guiro (long) of whirly tube/vacuum cleaner tube
- 3 Toms (low, medium, high)
- Kick-drum – skin loosened and muted with fabric
- Gran Cassa
- Thundersheet (large)

Following sticks and mallets are called for:

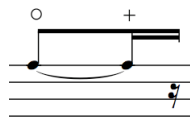
- Light sticks = very light wooden sticks e.g. chopsticks.
- Friction mallet/super ball.
- Ordinary (medium hard) mallets suitable for both gran cassa, thundersheet and toms.
- Large soft mallet for the gran cassa (last part of the piece).
- Bow for the crotales

Notation:

In general upstem notes are played with the right hand and downstem notes with the left hand (except of the the last part of the piece). Furthermore hi-hat openings (pedal) are notated with upstem and kick-drum (pedal) with downstem.



Dead stroke



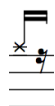
Hi-hat openings (pedal)



Guiro scraping



Slide the friction mallet on the drumskin



Clash the sticks together (like claves)



## Piano

Damp the strings of the 2 highest keys (B7 and C8) with sticky tag.

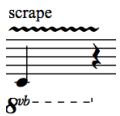
Attach a metalrod (approx diameter 0,8 cm. - approx. length 11 cm.) with a thin layer of sticky tag (between the rod and the strings) on the 7 lowest strings of the piano i.e. A0 to Eb1. Place it a few cm. from the hammers (inside the piano) producing a bell-like sound of harmonics when the keys are depressed ordinary.



Exaggerated and audible pedal movement (sustain pedal).



White key glissando.



Scrape with plectrum along the low E-string inside the piano.

## Strings



Sul tasto, ponticello and extreme ponticello. Any sign is valid until a new appears!

HB

High bowpressure.



Left hand pizz.



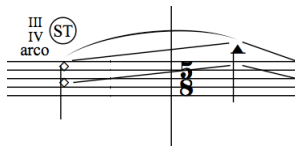
Col legno battuto on the notes indicated. Damp the strings with left hand.



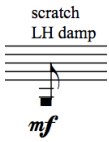
Artificial harmonic glissando. Fixed distance between left hand fingers (intervallic decrease) resulting in several downwards glissandi (seagull-effect)



(D. Bass) 'Hammer on' followed by vibrato-fluctuations.



Harmonic glissando to the highest possible position (and downwards again).



Scratch tone. Very high bowpressure and slow bow.

♩ = 60

*Meccanico e trasparente con precisione*

Score in C

$\frac{4}{4}$

$\frac{3}{8}$

$\frac{4}{4}$

$\frac{3}{4}$

$\frac{5}{8}$

$\frac{1}{4}$

$\frac{4}{4}$

$\frac{9}{16}$

senza vibr. sempre!

Flute

Whirly tube (E):

Oboe

*mf*

Bass clarinet

con sord. (fabric)

Bassoon

Horn

Whirly tube (E):

Trumpet

*mf*

con sord. (whispa/practise)

Trombone

Percussion

RH: light stick  
LH: light stick

(kick-drum)

Hi-hat  
Guire  
Toms  
Kick

*mf*

Piano

Ped.

Violin 1

Violin 2

Viola

Violoncello

LH damp

(Bartok pizz.)

*sfz*

Double bass

9  $\frac{9}{16}$   $\frac{4}{4}$   $\frac{2}{4}$   $\frac{4}{4}$   $\frac{5}{8}$   $\frac{4}{4}$   $\frac{4}{4}$   $\frac{4}{4}$

Fl.

Ob. Pan-tube: (EX)pan Whirly tube (E):

B. Cl.

Bn.

Hn.

Tpt.

Trb.

Perc. Hi-hat Guiro Toms Kick

Pno. *p*

Feel.

Vn. 1

Vn. 2

Vla.

Vc. *sfz*

Db. *sfz*

16  $\frac{4}{4}$   $\frac{3}{8}$   $\frac{4}{4}$   $\frac{3}{8}$   $\frac{3}{4}$   $\frac{4}{4}$

Fl. (key click)  $p$  Pan-tube: pan  $pp$  (wind tone)  $p$   $pp$

Ob.  $p$  (slap)  $p$  ord Whirly tube (E):  $mf$

B. Cl.  $p$  (key click)  $p$  (slap)  $p$

Bn.  $p$  (key click)  $p$  (slap)  $p$

Hn. (air) (ram)  $p$

Tpt.

Trb.  $p$

Perc. Hi-hat (sticks) (hi-hat pedal) (tom-rim)  $p$   
Güiro (güiro)  $p$   
Toms  $p$   
Kick  $p$

Pno.  $15^{ma}$   $p$   $15^{ma}$   $p$   $15^{ma}$   $p$

Ped.  $p$

Vn. 1

Vn. 2  $p$  (ST)  $p$

Vla.  $p$  (ST)  $p$

Vc. pizz.  $p$   $sfz$  pizz.  $p$   $sfz$

Db.  $p$  ham.  $p$   $sfz$

22 **4/4** **3/8** **2/4** **4/4** **3/8** **4/4**

Fl. *p* Pan-tube: pan ord *pp* *p* pan ord

Ob. *p* pan ord

B. Cl. *p* pan ord

Bn. *p* pan ord

Hn. 1/2 valve (hand-gliss.) 1/2 valve

Trpt. *p* pan ord

Trb. (air distance) (ord)

Perc. Hi-hat Guiro Toms Kick

Pno. *15<sup>ma</sup>* (chrom. cluster)

Pol. *8<sup>va</sup>*

Vn. 1 *II*

Vn. 2 *II*

Vla. *III* *IV*

Vc. *pizz.* *harm. gliss.* *arco* *sfz*

Db. *IV* *arco*

**A**

27 **1/4** **4/4** **3/8** **3/4** **4/4**

Fl. *pp* Whirly tube (E): Pan-tube: *mf* (air)(ram)

Ob. *mf* IN (EX) pan ord

B. Cl. *mf* 3

Bn. *mf* 6 3

Hn. *mf* 1/2 valve

Tpt. Short Ruler: Long *mf*

Trb. *mf* (beat on closed hi-hat)

Perc. Hi hat Guiro Toms Kick *mf*

Pno. *mf* 15<sup>ma</sup> 3 3 3 3 15<sup>ma</sup> 3 3 3 3

Ped. 8<sup>va</sup> 8<sup>va</sup>

Vn. 1 *mf* 6 6 3 (ST)

Vn. 2 *mf* II III (ST)

Vla. *mf* III IV (ST)

Vc. *sfz* pizz. *mf* arco III IV (ST) *sfz*

Db. *mf* IV

= 64

31  $\frac{4}{4}$   $\frac{3}{8}$   $\frac{4}{4}$   $\frac{3}{8}$   $\frac{4}{4}$

Fl.

Pan-tube:  
IN (EX) pan ord IN (EX) pan ord

Ob.

B. Cl.

Bn.

Hn. 1/2 valve 1/1 valve 1/2 valve 1/1 valve

Tpt. Short Long

Trb.

Perc.  
Hi-hat  
Guero  
Toms  
Kick

Pno. 15<sup>ma</sup> 15<sup>ma</sup> 15<sup>ma</sup> 15<sup>ma</sup>

Pol. 8<sup>va</sup> 8<sup>va</sup> 8<sup>va</sup> 8<sup>va</sup>

Vn. 1

Vn. 2

Vla.

Vc. pizz. arco III IV III IV

Db. arco IV III



$\bullet = 60$

35  $\frac{4}{4}$   $\frac{3}{8}$   $\frac{2}{4}$   $\frac{4}{4}$   $\frac{3}{8}$

Fl.

Ob. IN (EX) pan ord Whirly tube (E): Pan-tube: IN (EX) pan

B. Cl.

Bn.

Hn. 1/2 valve

Tpt. Short Long

Trb.

Perc. Hi hat Cuiro Toms Kick

Pno.  $15^{ma}$   $8^{va}$

Vn. 1

Vn. 2 II III

Vla. III IV

Vc. pizz. arco III IV

Db. arco IV

♩ = 64

♩ = 67

39

Fl.

Ob. ord IN (EX) pan

B. Cl. 3

Bn. 3 6

Hn. 1/1 valve 1/2 valve

Tpt. Short Long

Trb.

Perc. Hi-hat Guiro Toms Kick

Pno. 15<sup>ma</sup> 3 8<sup>va</sup>

Vn. 1 3 6

Vn. 2 I II

Vla. III

Vc. pizz arco III IV

Db. arco III

♩ = 71

♩ = 76

43 8/8 4/4 8/8 4/4

Fl. *mp* 6 *x3* 6

Ob. *mp* ord IN (EX) pan *x3* IN (EX) pan

B. Cl. *mp* 3 *x3* 3

Bn. *mp* 3 6 *x3* 3 6

Hn. *mp* 1/1 valve 1/2 valve *x3* 1/1 valve 1/2 valve

Tpt. Short Long *mp* *x3*

Trb. *mp* *x3*

Perc. Hi hat *mp* *x3*  
 Guiro  
 Toms  
 Kiek

Pno. *mp* 15<sup>ma</sup> *x3* 15<sup>ma</sup>

Ped. 8<sup>va</sup> 8<sup>va</sup>

Vn. 1 *mp* *x3*

Vn. 2 *mp* *x3*

Vla. *mp* *x3*

Vc. *mp* pizz. arco *x3* pizz. arco

Db. *mp* arco *x3* arco

♩ = 60

♩ = 76

47

♩ = 80

♩ = 60

51 

Fl.

Ob. ord IN (EX) pan Whirly tube (E)

B. Cl. 3

Bn. 3 6

Hn. 1/1 valve 1/2 valve +

Tpt. Short Long

Trb.

Perc. Hi hat Guiro Toms Kick

Pno. 15<sup>ma</sup> 3 3 3 3 15<sup>ma</sup> 3 3 3 3 15<sup>ma</sup> 3 3 3 3

Ped. 8<sup>va</sup> 8<sup>va</sup> 8<sup>va</sup>

Vn. 1 3 6 6 3

Vn. 2 I II

Vla. III

Vc. pizz. arco II III

Db. arco III

# B

♩ = 64

55 3/8 4/4 3/8 4/4

Fl. *mf*

Pan-tube: *mf* IN (EX) pan ord IN (EX) pan ord

Ob. *mf*

B. Cl. *mf*

Bn. *mf*

Hn. *mf* 1/2 valve 1/1 valve 1/2 valve

Tpt. Short Long *mf*

Trb. *mf*

Perc. Hi-hat Guiro Toms Kick *mf*

Pno. *mf* 15<sup>ma</sup> 8<sup>va</sup>

Vn. 1 *mf* (ST)

Vn. 2 *mf* (ST)

Vla. *mf* (ST)

Vc. *mf* pizz. arco (ST)

Db. *mf* arco (ST)

♩ = 67

♩ = 71

59  $\frac{4}{4}$   $\frac{3}{8}$   $\frac{4}{4}$   $\frac{3}{8}$   $\frac{4}{4}$

Fl. 59  $\overset{6}{\times \times \times \times \times \times}$   $\overset{6}{\times \times \times \times \times \times}$   $\overset{6}{\times \times \times \times \times \times}$   $\overset{6}{\times \times \times \times \times \times}$

Ob. 59 IN (EX) pan ord IN (EX) pan ord *mp*

B. Cl. 59  $\overset{3}{\times \times \times}$   $\overset{3}{\times \times \times}$   $\overset{3}{\times \times \times}$   $\overset{3}{\times \times \times}$  *mp*

Bn. 59  $\overset{6}{\times \times \times \times \times \times}$   $\overset{3}{\times \times \times}$   $\overset{6}{\times \times \times \times \times \times}$   $\overset{3}{\times \times \times}$  *mp*

Hn. 59 1/1 valve 1/2 valve O + 1/1 valve 1/2 valve O + *mp*

Tpt. 59 Short Long *mp*

Trb. 59 *mp*

Perc. 59 Hi hat Gtro Toms Kick *mp*

Pno. 59  $\overset{15^{ma}}{\times \times \times \times \times \times}$   $\overset{15^{ma}}{\times \times \times \times \times \times}$   $\overset{15^{ma}}{\times \times \times \times \times \times}$   $\overset{15^{ma}}{\times \times \times \times \times \times}$  *mp*

Ped. 59  $\overset{8^{th}}{\times \times \times}$   $\overset{8^{th}}{\times \times \times}$   $\overset{8^{th}}{\times \times \times}$   $\overset{8^{th}}{\times \times \times}$

Vn. 1 59  $\overset{6}{\times \times \times \times \times \times}$   $\overset{6}{\times \times \times \times \times \times}$   $\overset{6}{\times \times \times \times \times \times}$   $\overset{6}{\times \times \times \times \times \times}$  *mp*

Vn. 2 59 I II  $\overset{6}{\times \times \times \times \times \times}$   $\overset{6}{\times \times \times \times \times \times}$   $\overset{6}{\times \times \times \times \times \times}$   $\overset{6}{\times \times \times \times \times \times}$  *mp*

Vla. 59 II III  $\overset{6}{\times \times \times \times \times \times}$   $\overset{6}{\times \times \times \times \times \times}$   $\overset{6}{\times \times \times \times \times \times}$   $\overset{6}{\times \times \times \times \times \times}$  *mp*

Vc. 59 pizz. arco III IV  $\overset{6}{\times \times \times \times \times \times}$   $\overset{6}{\times \times \times \times \times \times}$   $\overset{6}{\times \times \times \times \times \times}$   $\overset{6}{\times \times \times \times \times \times}$  *mp*

Db. 59 arco  $\overset{6}{\times \times \times \times \times \times}$   $\overset{6}{\times \times \times \times \times \times}$   $\overset{6}{\times \times \times \times \times \times}$   $\overset{6}{\times \times \times \times \times \times}$  *mp*

♩ = 76

♩ = 80

63 4/4 3/8 4/4 3/8 4/4

Fl.

Ob. IN (EX) pan ord IN (EX) pan ord

B. Cl. 3

Bn. 6 3

Hn. 1/1 valve 1/2 valve 1/1 valve 1/2 valve

Tpt. Short Long

Trb.

Perc. Hi-hat Guiro Toms Kick

Pno. 15<sup>ma</sup> 8<sup>va</sup>

Vn. 1 6

Vn. 2 I II

Vla. III

Vc. pizz. arco II III

Db. arco III



♩ = 85

♩ = 90

67  $\frac{4}{4}$   $\frac{3}{8}$   $\frac{4}{4}$   $\frac{3}{8}$   $\frac{4}{4}$

Fl. *p*

Ob. IN  $\sharp$  (EX) pan *p* ord

B. Cl. *p*

Bn. *p*

Hn. 1/1 valve 1/2 valve *p*

Tpt. Short Long *p*

Trb. *p*

Perc. Hi hat Cuiro Toms Kick *p*

Pno. *p* 15<sup>ma</sup>

Ped. *p*

Vn. 1 *p* (SP)

Vn. 2 *p* (SP)

Vla. *p* (SP)

Vc. *p* pizz. arco (SP)

Db. *p* arco (SP)

♩ = 95

♩ = 100

71  $\frac{4}{4}$   $\frac{3}{8}$   $\frac{4}{4}$   $\frac{3}{8}$   $\frac{4}{4}$

Fl. *pp*

Ob. *pp* (EX) pan ord IN (EX) pan ord

B. Cl. *pp*

Bn. *pp*

Hn. *pp* 1/1 valve 1/2 valve 1/1 valve 1/2 valve

Tpt. *pp* Short Long

Trb. *pp*

Perc. *pp* Hi-hat Guiro Toms Kick

Pno. *pp* 15<sup>ma</sup> 8<sup>va</sup>

Fed. *pp* 8<sup>va</sup>

Vn. 1 *pp*

Vn. 2 *pp* 8<sup>va</sup> (SPE)

Vla. *pp* (SPE)

Vc. *pp* pizz arco (SPE)

Db. *pp* arco (SPE)

♩ = 107

♩ = 113

75  $\frac{4}{4}$   $\frac{3}{8}$   $\frac{4}{4}$   $\frac{3}{8}$   $\frac{4}{4}$

Fl. *ppp* (EX) pan ord

Ob. *ppp* IN (EX) pan ord

B. Cl. *ppp*

Bn. *ppp*

Hn. *ppp* 1/1 valve 1/2 valve

Tpt. Short Long *ppp*

Trb. *ppp*

Perc. Hi hat Cuiro Toms Kiek *ppp*

Pno. *ppp* 15<sup>ma</sup> 8<sup>va</sup>

Ped. 8<sup>va</sup>

Vn. 1 *ppp*

Vn. 2 *ppp* I II III

Vla. *ppp* III IV II

Vc. *ppp* pizz. arco I II

Db. *ppp* arco II

x4

♩ = 107

♩ = 113

79  $\frac{4}{4}$   $\frac{3}{8}$   $\frac{4}{4}$   $\frac{3}{8}$   $\frac{4}{4}$

Fl.

Ob. IN  $\frac{b}{3}$  (EX) pan ord

B. Cl. 3

Bn. 6 3

Hn. 1/1 valve 1/2 valve + 1/1 valve 1/2 valve +

Tpt. Short Long

Trb.

Perc. Hi-hat Guiro Toms Kick

Pno. 15<sup>ma</sup> 3 3 3 3 8<sup>va</sup> 8<sup>va</sup> 8<sup>va</sup> 8<sup>va</sup>

Vn. 1 6 6 3 8<sup>va</sup> 8<sup>va</sup>

Vn. 2 I II 8<sup>va</sup> 8<sup>va</sup> II III

Vla. III IV II II II

Vc. pizz arco II pizz arco II II

Db. arco II

♩ = 107

♩ = 100

83 4/4 3/8 4/4 3/8 4/4

Fl. 83

Ob. 83 IN (EX) pan ord

B. Cl. 83 3 pp

Bn. 83 6 3 pp

Hn. 83 1/1 valve 1/2 valve pp

Tpt. 83 Short Long pp

Trb. 83 pp

Perc. 83 Hi hat Guiro Toms Kiek pp

Pno. 83 15<sup>ma</sup> 3 pp

Ped. 83 8<sup>va</sup> pp

Vn. 1 83 6 pp

Vn. 2 83 I II 8<sup>va</sup> pp

Vla. 83 III IV II pp

Vc. 83 pizz arco I II pp

Db. 83 arco II pp

♩ = 95

♩ = 90

87

♩ = 85

♩ = 80

91  $\frac{4}{4}$   $\frac{3}{8}$   $\frac{4}{4}$   $\frac{3}{8}$   $\frac{4}{4}$

Fl.  $\frac{6}{6}$   $\frac{6}{6}$   $\frac{6}{6}$   $\frac{6}{6}$

Ob.  $\text{IN } \frac{\sharp}{\flat}$  (EX) pan ord  $\text{IN } \frac{\sharp}{\flat}$  (EX) pan ord  $\text{IN } \frac{\sharp}{\flat}$  (EX) pan ord  $\text{IN } \frac{\sharp}{\flat}$  (EX) pan ord

B. Cl.  $\frac{3}{3}$   $\frac{3}{3}$   $\frac{3}{3}$   $\frac{3}{3}$   $\text{mp}$

Bn.  $\frac{6}{6}$   $\frac{6}{6}$   $\frac{6}{6}$   $\frac{6}{6}$   $\text{mp}$

Hn.  $\frac{1}{1}$  valve  $\frac{1}{2}$  valve  $\text{O}$   $\frac{1}{1}$  valve  $\frac{1}{2}$  valve  $\text{O}$   $\text{mp}$

Tpt. Short Long  $\text{mp}$

Trb.  $\text{mp}$

Perc. Hi hat  $\text{mp}$   
 Guiro  $\text{mp}$   
 Toms  $\text{mp}$   
 Kick  $\text{mp}$

Pno.  $\frac{15^{\text{ma}}}{4}$   $\frac{15^{\text{ma}}}{4}$   $\frac{15^{\text{ma}}}{4}$   $\frac{15^{\text{ma}}}{4}$   $\text{mp}$

Ped.  $\delta^{\text{rb}}$   $\delta^{\text{rb}}$   $\delta^{\text{rb}}$   $\delta^{\text{rb}}$

Vn. 1  $\text{ORD}$   $\text{mp}$

Vn. 2  $\text{ORD}$   $\text{mp}$

Vla.  $\text{ORD}$   $\text{mp}$

Vc.  $\text{pizz. arco}$   $\text{ORD}$   $\text{mp}$

Db.  $\text{arco}$   $\text{ORD}$   $\text{mp}$

♩ = 76

♩ = 71

95 4/4 3/8 4/4 3/8 3/8

Fl.

Ob. IN (EX) pan ord IN (EX) pan

B. Cl. 3

Bn. 6 3 6 3

Hn. 1/1 valve 1/2 valve 1/1 valve 1/2 valve

Tpt. Short Long

Trb.

Perc. Hi-hat Guiro Toms Kick

Pno. 15<sup>ma</sup> 8<sup>vb</sup>

Vn. 1 6 6 3

Vn. 2 I II

Vla. II III III

Vc. pizz. arco II III

Db. arco IV



♩ = 67

99 **x6** **4/4** **mf** **ord** **IN** **(EX) pan** **ord**

Fl.

Ob. **x6** **mf**

B. Cl. **x6** **mf**

Bn. **x6** **mf**

Hn. **x6** **1/1 valve** **1/2 valve** **+** **mf**

Tpt. **x6** **Short** **Long** **mf**

Trb. **x6** **mf**

Perc. **x6** **Hi hat** **Ciuro** **Toms** **Kick** **mf**

Pno. **x6** **15<sup>ma</sup>** **mf**

Ped. **8<sup>va</sup>**

Vn. 1 **x6** **mf**

Vn. 2 **x6** **I** **II** **mf**

Vla. **x6** **II** **III** **mf**

Vc. **x6** **pizz.** **arco** **III** **IV** **mf**

Db. **x6** **arco** **mf**

♩ = 64

♩ = 60

103  $\frac{4}{4}$   $\frac{3}{8}$   $\frac{4}{4}$   $\frac{3}{8}$   $\frac{4}{4}$

Fl.

Ob. *IN* (EX) pan ord

B. Cl.

Bn.

Hn.  $\frac{1}{1}$  valve  $\frac{1}{2}$  valve

Tpt. Short Long

Trb.

Perc. Hi-hat Guiro Toms Kick

Pno. *15<sup>ma</sup>*

Vn. 1

Vn. 2

Vla. *III IV*

Vc. *pizz.* *arco* *III IV*

Db. *arco* *III IV*

♩ = 90

♩ = 60

107  $\frac{4}{4}$   $\frac{3}{8}$   $\frac{4}{4}$   $\frac{3}{8}$   $\frac{2}{4}$

Fl.  $\text{x3}$   $p$   $(EX)$  pan  $ord$   $mf$   $(EX)$  pan  $ord$

Ob.  $\text{x3}$   $p$   $mf$

B. Cl.  $\text{x3}$   $p$   $mf$

Bn.  $\text{x3}$   $p$   $mf$

Hn.  $\text{x3}$   $1/1$  valve  $1/2$  valve  $p$   $mf$

Tpt. Short Long  $\text{x3}$   $p$   $mf$

Trb.  $\text{x3}$   $p$   $mf$

Perc. Hi-hat  $\text{x3}$   $p$   $mf$   
 Guiro  
 Toms  
 Kick

Pno.  $\text{x3}$   $p$   $mf$

Ped.  $8^{vb}$

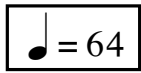
Vn. 1  $\text{x3}$   $p$   $mf$

Vn. 2  $\text{x3}$   $p$   $mf$

Vla.  $\text{x3}$   $p$   $mf$

Vc.  $\text{x3}$   $pizz.$   $arco$   $p$   $mf$

Db.  $\text{x3}$   $arco$   $p$   $mf$



III 2/4 3/8 4/4 3/8

Fl. III GP 6

Ob. III ord (EX) pan IN IN (EX) pan

B. Cl. III GP 3

Bn. III GP 3 6

Hn. III GP 1/1 valve 1/2 valve +

Tpt. III Short Long GP 1

Trb. III GP

Perc. Hi-hat Guiro Toms Kick GP 6 3

Pno. III 15ma 3 3 3 3 3 3 3 3

Ped. 8va 3 8va 3 8va 3

Vn. 1 III GP 3 6 6 6

Vn. 2 III GP II III

Vla. III III IV

Vc. III IV pizz. arco III IV

Db. III IV arco III

♩ = 95

♩ = 90

115

FL. *pp* *p*

Ob. *pp* *p* ord IN (EX) pan

B. Cl. *pp* *p*

Bn. *pp* *p*

Hn. *pp* *p* 1/1 valve 1/2 valve +

Tpt. *pp* *p* Short Long

Trb. *pp* *p*

Perc. *pp* *p* Hi-hat Cymb. Toms Kick

Pno. *pp* *p* 15ma 8va

Ped.

Vn. 1 *pp* *p*

Vn. 2 *pp* *p* SP

Vla. *pp* *p* SP

Vc. *pp* *p* pizz. arco SP

Db. *pp* *p* arco SP

♩ = 107

♩ = 85

119  $\frac{3}{8}$   $\frac{4}{4}$   $\frac{3}{8}$   $\frac{4}{4}$   $\frac{2}{4}$

Fl.  $ppp$   $p$

Ob. ord IN (EX) pan ord IN  $ppp$   $p$

B. Cl.  $ppp$   $p$

Bn.  $ppp$   $p$

Hn. 1/1 valve 1/2 valve 1/1 valve  $ppp$   $p$

Tpt. Short Long  $ppp$   $p$

Trb.  $ppp$   $p$

Perc. Hi-hat Guiro Toms Kick  $ppp$   $p$

Pno.  $15^{ma}$   $ppp$   $p$

Ped.  $8^{th}$

Vn. 1  $ppp$   $p$

Vn. 2  $ppp$   $p$

Vla.  $ppp$   $p$

Vc. pizz arco  $ppp$   $p$

Db. arco  $ppp$   $p$

$\text{♩} = 67$

123  $\frac{2}{4}$   $\frac{3}{8}$   $\frac{4}{4}$   $\frac{3}{8}$   $\frac{4}{4}$

Fl.  $\text{mf}$

Ob. (EX) pan ord IN (EX) pan ord  $\text{mf}$

B. Cl.  $\text{mf}$

Bn.  $\text{mf}$

Hn. 1/2 valve + 1/1 valve  $\text{mf}$  1/2 valve +

Tpt. Short Long  $\text{mf}$

Trb.  $\text{mf}$

Perc. Hi-hat Guiro Toms Kick  $\text{mf}$

Pno.  $\text{mf}$  (15<sup>ma</sup>) 15<sup>ma</sup>

Ped.  $\text{mf}$

Vn. 1  $\text{mf}$  (ST)

Vn. 2  $\text{mf}$  (ST)

Vla.  $\text{mf}$  (ST)

Vc.  $\text{mf}$  arco (SP) pizz. arco (ST)

Db.  $\text{mf}$  (ST) arco

♩ = 100

♩ = 76

127 **4/4** **3/8** **4/4** **3/8** **4/4**

Fl. *pp* *mp*

Ob. *pp* (EX) pan ord *mp* (EX) pan ord

B. Cl. *pp* *mp*

Bn. *pp* *mp*

Hn. *pp* 1/1 valve 1/2 valve *mp* 1/1 valve 1/2 valve

Tpt. Short Long *pp* *mp*

Trb. *pp* *mp*

Perc. Hi-hat Guiro Toms Kick *pp* *mp*

Pno. *pp* *mp*

Ped. *pp* *mp*

Vn. 1 *pp* *mp*

Vn. 2 *pp* *mp*

Vla. *pp* *mp*

Vc. *pp* *mp*

Db. *pp* *mp*

*pp* *mp*



♩ = 71

♩ = 107

131

4/4

3/8

4/4

FL. 131 *ppp* (EX) pan ord *ppp* ord (EX) pan IN

Ob. 131 *ppp* ord *ppp* ord (EX) pan IN

B. Cl. 131 *ppp*

Bn. 131 *ppp*

Hn. 131 1/1 valve 1/2 valve + *ppp* 1/2 valve + 1/1 valve

Tpt. 131 Short Long *ppp*

Trb. 131 *ppp*

Perc. Hi-hat Guiro Tom Kick *ppp*

Pno. 131 *ppp* 15<sup>ma</sup> 8<sup>va</sup>

Ped. 131 8<sup>va</sup>

Vn. 1 131 *ppp* (SPE)

Vn. 2 131 *ppp* (SPE)

Vla. 131 *ppp* (SPE)

Vc. 131 *ppp* (SPE) pizz. arco III IV

Db. 131 *ppp* (SPE) arco IV

♩ = 113

♩ = 120

135

Fl.

Ob.

B. Cl.

Bn.

Hn.

Tpt.

Trb.

Perc.

Pno.

Ped.

Vn. 1

Vn. 2

Vla.

Vc.

Db.

(EX) pan

ord

IN

Short

Long

1/2 valve

15<sup>ma</sup>

8<sup>va</sup>

8<sup>vb</sup>

6

3

x5

IN

(EX) pan

ord

x5

1/2 valve

1/2 valve

x5

Short

Long

x5

15<sup>ma</sup>

15<sup>ma</sup>

x5

8<sup>va</sup>

8<sup>va</sup>

x5

6

6

3

x5

II

III

II

III

IV

x5

pizz.

arco

I

II

x5

pizz.

arco

I

II

x5

arco

II

IV

x5

♩ = 128

♩ = 134

139

Fl. *dim. poco a poco al niente*

Ob. *dim. poco a poco al niente* (EX) pan ord IN (EX) pan ord

B. Cl. *dim. poco a poco al niente*

Bn. *dim. poco a poco al niente*

Hn. *dim. poco a poco al niente* 1/1 valve 1/2 valve 1/2 valve

Tpt. *dim. poco a poco al niente* Short Long

Trb. *dim. poco a poco al niente*

Perc. *dim. poco a poco al niente* Hi-hat Cymbal Tom-tom Kick

Pno. *dim. poco a poco al niente* 15<sup>ma</sup>

Ped. *dim. poco a poco al niente* 8<sup>va</sup>

Vn. I *dim. poco a poco al niente*

Vn. II *dim. poco a poco al niente*

Vla. *dim. poco a poco al niente*

Vc. *dim. poco a poco al niente* pizz. arco I II III

Db. *dim. poco a poco al niente* arco III

♩ = 142

♩ = 152

143  $\frac{4}{4}$   $\frac{3}{8}$   $\frac{4}{4}$   $\frac{3}{8}$   $\frac{4}{4}$

Fl.  $\text{bzz}$

Ob.  $\text{IN}$  (EX) pan ord

B. Cl.  $\text{3}$

Bn.  $\text{3}$

Hn.  $\text{1/2 valve}$

Tpt. Short Long

Trb.  $\text{3}$

Perc.  $\text{Hi-hat}$   $\text{Cymb}$   $\text{Tom}$   $\text{Kick}$

Pno.  $\text{15}^{\text{ma}}$   $\text{3}$   $\text{8}^{\text{va}}$

Ped.  $\text{8}^{\text{va}}$

Vn. 1

Vn. 2  $\text{I}$   $\text{II}$   $\text{III}$

Vla.  $\text{II}$   $\text{III}$

Vc.  $\text{pizz.}$   $\text{arco}$   $\text{I}$   $\text{II}$

Db.  $\text{IV}$

♩ = 160

♩ = 170

♩ = 180

147

Fl.

Ob. (EX) pan ord

B. Cl.

Bn.

Hn.

Tpt. Short Long

Trb.

Perc. Hi-hat Guiro Tom-toms Kick

Pno. 15<sup>ma</sup> 8<sup>va</sup> - - 3

Vn. 1

Vn. 2

Vla.

Vc.

Db.

$\text{♩} = 190$

$\text{♩} = 200$

152

Fl.

Ob.

B. Cl.

Bn.

Hn.

Tpt.

Trb.

Perc.

Pno.

Vn. 1

Vn. 2

Vla.

Vc.

Db.

ord

Short  
Long

Hat  
Cymb  
Tom  
Kick

$15^{ma}$

Ped.

♩ = 214

♩ = 226

157

4/4

3/8

4/4

3/8

Fl. 157

Ob. 157 ord

B. Cl. 157

Bn. 157

Hn. 157

Tpt. 157 Short Long

Trb. 157

Perc. 157 Hi-hat Guiro Tom Kick

Pno. 157 *15<sup>ma</sup>* 157 *15<sup>ma</sup>* 157 *8<sup>va</sup>---* 157 *8<sup>va</sup>---*

Vn. 1 157

Vn. 2 157 I II III

Vla. 157

Vc. 157

Db. 157

GP

**D** = 80

*Vivace e trasparente*

162  $\frac{3}{16}$   $\frac{4}{4}$   $\frac{3}{4}$   $\frac{3}{16}$   $\frac{2}{4}$   $\frac{5}{4}$   $\frac{3}{16}$   $\frac{4}{4}$   $\frac{5}{16}$   $\frac{3}{4}$

Fl. *p*

Oboe: *p*

B. Cl. *p*

Reed alone (approx. notation): *p*

Bn. *p*

Hn. (air) *sfz*

Trumpet: con sord. (Harmon - stem in) *p* 1/2 valve *sfz*

Trb. senza sord. (air) (ram) *mf*

Perc. RH: light stick LH: friction mallet *p* (low tom)

Pno. *mp* 15<sup>ma</sup> 3 15<sup>ma</sup> 3

Vn. 1 *p* (ORD) I II

Vn. 2 *p* I II

Vla. *p* I II III IV CLB LH damp

Vc. *p* pizz.

Db. *p* I/7. II/7. 3











196 **11/16** **3/4** **13/16** **7/8** **4/4** **7/8**

Fl. *sfz*

Ob. *p* 6

B. Cl. (air)

Bn. 3 3 3

Hn. 1/2 valve

Tpt. 1/2 valve

Trbo. harm. gliss.

Perc. Hi-hat (medium tom) 6 3

Pno. 15<sup>ma</sup>

Vn. 1 (ORD) IV

Vn. 2 (ORD) (SPE) 8<sup>va</sup> loco

Vla. (ORD) (SPE) *p*

Vc. HB *mf*

Db. III IV 4. 7. 5. 9. 6.

201  $\frac{7}{8}$   $\frac{13}{16}$   $\frac{3}{4}$   $\frac{11}{16}$   $\frac{5}{8}$   $\frac{9}{16}$

Fl.  $sfz$   $p$

Ob.  $6$

B. Cl.  $6$   $3$

Bn.  $3-3-3$   $3$

Hn.  $1/2$  valve  $+$

Tpt.  $+$   $+$   $+$   $+$   $+$   $1/1$  valve

Trbo.  $+$

Perc. Hi-hat  $+$   $+$   $6$   $3$   $+$   $+$   
Güiro  
Toms  
Kick

Pno.  $15^{ma}$   $8^{va}$

Pol.  $1$   $3$   $3$

Vn. 1  $IV$

Vn. 2  $8^{va}$   $loco$   $ORD$   $SPE$

Vla.  $ORD$   $SPE$

Vc.  $HB$   $1$   $11b$   $mf$

Db.  $III$   $IV$   $4.$   $7.$   $5.$   $9.$   $6.$   $1/4$   $3$







217  $\frac{3}{8}$   $\frac{11}{16}$   $\frac{1}{4}$   $\frac{9}{16}$   $\frac{7}{8}$   $\frac{7}{16}$

Fl. *p*

Ob. *mf*

B. Cl. *p*

Bn. *mf*

Hn. *pp* *p*

Tpt.

Trbo.

Perc. Hi-hat, Guiro, Toms, Kick

Pno. *15<sup>ma</sup>*

Ped.

Vn. 1 *mf* *p* *SPE* *scratch LH damp*

Vn. 2 *ORD* *SPE* *loco*

Vla. *ORD* *SPE*

Vc. *arco* *SPE*

Db. *1/7, II/7*

222

**7/16** **3/4** **5/16** **3/8** **3/4** **3/8**

Fl.

Ob.

B. Cl.

Bn.

Hn.

Tpt.

Trbo.

Perc.

Pno.

Pol.

Vn. 1

Vn. 2

Vla.

Vc.

Db.

*p*

*mf*

*mf*

1/2 valve

1/1 valve

Hi-hat

Güiro

Toms

Kick

8va

ORD

IV

III

CLB

LH damp

HB

11/5

III/6

1/4

227 **3/8** **13/16** **7/16** **5/16** **11/16** **4/8**

Fl. *sfz* *p* **x3**

Ob. **x3**

B. Cl. **x3**

Bn. **x3**

Hn. 1/1 valve *pp* **x3**

Tpt. 1/2 valve 1/1 valve **x3**

Trbo. **x3** *p*

Perc. Hi-hat *mf* **x3**

Güiro

Toms

Kick

Pno. *15<sup>mi</sup>* *8<sup>va</sup>* **x3**

Ped.

Vn. 1 *scratch* *LH damp* *mf* **x3**

Vn. 2 **x3** **ORD** **SPE**

Vla. **x3** **CLB** **IV** *LH damp* **ORD** **SPE**

Vc. *arco* *1* *7* **x3**

Db. **x3** III IV 4. 7. 5. 9. 6. II/5. III/6.

232

Fl.

Ob.

B. Cl.

Bn.

Hn.

Tpt.

Trbo.

Perc.

Pno.

Pol.

Vn. 1

Vn. 2

Vla.

Vc.

Db.

4/8 7/8 5/8 1/4 3/16 9/16

*mf* *p* *sfz*

1/2 valve

8<sup>va</sup> 15<sup>ma</sup>

*pizz.* *arco* *mf* *p* *loco*

*pizz.* *arco* *mf* *p*

*pizz.*

1/4 1/7 II/7

ORD

I II

237 **9/16** **1/4** **7/16** **13/16** **5/8** **3/16**

Fl. *mf* *sfz* *p*

Ob. *mf*

B. Cl. *mf*

Bn.

Hn. *p*

Tpt. 1/1 valve 1/2 valve 1/1 valve

Trbo.

Perc. Hi-hat, Guiro, Toms, Kick

Pno. *15<sup>ma</sup>*, *8<sup>va</sup>*, *15<sup>ma</sup>*, *8<sup>va</sup>*

Ped.

Vn. 1 *SPE*

Vn. 2

Vla.

Vc. *SPE*

Db. *II/5*, *III/6*, *III/IV*, *4.*, *7.*, *5.*, *9.*, *6.*, *I/4*



247  $\frac{3}{8}$   $\frac{7}{8}$   $\frac{9}{16}$   $\frac{11}{16}$   $\frac{3}{4}$   $\frac{4}{8}$

Fl.  $p$   $mf$   $p$   $x5$

Ob.  $p$   $mf$   $p$   $x5$

B. Cl.  $x5$

Bn. Reed alone:  $p$   $x5$

Hn.  $pp$   $p$   $x5$  1/2 valve  $\circ$   $+$

Tpt.  $x5$

Trbo.  $p$   $x5$

Perc. RH: light stick LH: friction mallet  
Hi-hat  $p$   $x5$   
Güiro  
Toms  
Kick

Pno.  $mp$   $x5$

Ped.

Vn. 1 scratch LH damp  $mf$   $p$   $x5$  (SPE) (ORD) IV-----

Vn. 2  $p$   $x5$  (ORD) (SPE)

Vla.  $p$   $x5$  (ORD) (SPE)

Vc. arco  $p$   $x5$  (SPE) HB-----  $mf$

Db.  $x5$

252

4/8 11/16 8/8 13/16 9/16 3/4

Fl. *p* *sfz*

Ob. *mf*

B. Cl. *p*

Bn. *mf* *p*

Hn. 1/1 valve

Tpt. 1/2 valve + + + + *p*

Trbo. *mf* *p*

Perc. Hi-hat, Guiro, Toms, Kick

Pno. *8va* *15ma*

Ped.

Vn. 1 *SPE*

Vn. 2 *pizz.* *arco* *3* *ORD* *SPE*

Vla. *pizz.* *HB- arco* *3* *ORD* *SPE* *mf* *p*

Vc. *SPE* *p*

Db. *1/4* *p* III 4. 7. 5. 9. 6. IV



257 **3/4** **3/16** **7/16** **7/8** **4/8** **5/16**

Fl. *p* **x7**

Ob. *p* **x7**

B. Cl. **x7**

Bn. **x7**

Hn. 1/2 valve *sfz* 1/1 valve **x7**

Tpt. **x7** 1/1 valve

Trbo. **x7** *mf* *p*

Perc. Hi-hat *mf* *p*  
Guitro  
Toms  
Kick

Pno. *mf* *p*

Vn. I **x7** *mf* *p*

Vn. II **x7** *mf* *p*

Vla. **x7** *mf* *p*

Vc. **x7** *mf* *p*

Db. **x7** *mf* *p*

# H

262  $\frac{5}{16}$   $\frac{1}{4}$   $\frac{4}{4}$   $\frac{3}{8}$   $\frac{3}{4}$   $\frac{4}{4}$   $\frac{3}{4}$

Fl.  $\frac{5}{16}$   $\frac{1}{4}$   $\frac{4}{4}$   $\frac{3}{8}$   $\frac{3}{4}$   $\frac{4}{4}$   $\frac{3}{4}$

Ob.  $\frac{5}{16}$   $\frac{1}{4}$   $\frac{4}{4}$   $\frac{3}{8}$   $\frac{3}{4}$   $\frac{4}{4}$   $\frac{3}{4}$

B. Cl.  $\frac{5}{16}$   $\frac{1}{4}$   $\frac{4}{4}$   $\frac{3}{8}$   $\frac{3}{4}$   $\frac{4}{4}$   $\frac{3}{4}$

Bn.  $\frac{5}{16}$   $\frac{1}{4}$   $\frac{4}{4}$   $\frac{3}{8}$   $\frac{3}{4}$   $\frac{4}{4}$   $\frac{3}{4}$

Hn.  $\frac{5}{16}$   $\frac{1}{4}$   $\frac{4}{4}$   $\frac{3}{8}$   $\frac{3}{4}$   $\frac{4}{4}$   $\frac{3}{4}$

Tpt.  $\frac{5}{16}$   $\frac{1}{4}$   $\frac{4}{4}$   $\frac{3}{8}$   $\frac{3}{4}$   $\frac{4}{4}$   $\frac{3}{4}$

Trbo.  $\frac{5}{16}$   $\frac{1}{4}$   $\frac{4}{4}$   $\frac{3}{8}$   $\frac{3}{4}$   $\frac{4}{4}$   $\frac{3}{4}$

Perc.  $\frac{5}{16}$   $\frac{1}{4}$   $\frac{4}{4}$   $\frac{3}{8}$   $\frac{3}{4}$   $\frac{4}{4}$   $\frac{3}{4}$

Pno.  $\frac{5}{16}$   $\frac{1}{4}$   $\frac{4}{4}$   $\frac{3}{8}$   $\frac{3}{4}$   $\frac{4}{4}$   $\frac{3}{4}$

Ped.  $\frac{5}{16}$   $\frac{1}{4}$   $\frac{4}{4}$   $\frac{3}{8}$   $\frac{3}{4}$   $\frac{4}{4}$   $\frac{3}{4}$

Vn. 1  $\frac{5}{16}$   $\frac{1}{4}$   $\frac{4}{4}$   $\frac{3}{8}$   $\frac{3}{4}$   $\frac{4}{4}$   $\frac{3}{4}$

Vn. 2  $\frac{5}{16}$   $\frac{1}{4}$   $\frac{4}{4}$   $\frac{3}{8}$   $\frac{3}{4}$   $\frac{4}{4}$   $\frac{3}{4}$

Vla.  $\frac{5}{16}$   $\frac{1}{4}$   $\frac{4}{4}$   $\frac{3}{8}$   $\frac{3}{4}$   $\frac{4}{4}$   $\frac{3}{4}$

Vc.  $\frac{5}{16}$   $\frac{1}{4}$   $\frac{4}{4}$   $\frac{3}{8}$   $\frac{3}{4}$   $\frac{4}{4}$   $\frac{3}{4}$

Db.  $\frac{5}{16}$   $\frac{1}{4}$   $\frac{4}{4}$   $\frac{3}{8}$   $\frac{3}{4}$   $\frac{4}{4}$   $\frac{3}{4}$

6

M 2

*ff*

*fff*

Bassoon:

M 2

*ff*

1/2 valve

1/1 valve

Whirly tube (F#):

*mf*

*mf*

*fff*

RH: mallet  
LH: mallet

China  
Thunder  
Toms  
Gr.G.

*mf*

*fff*

*f*

*f*

*mf*

15<sup>ma</sup>

3

*fff*

*f*

*mp*

HB - - - - -  
molto vibr.

SP  
senza vibr.

SPLE

*ff*

*mp*

HB - - - - -  
molto vibr.

SP  
senza vibr.

SPLE

*ff*

*mp*

HB - - - - -  
molto vibr.

SP  
senza vibr.

SPLE

*ff*

*mp*

HB - - - - -  
molto vibr.

SP  
senza vibr.

SPLE

*ff*

*mp*

CLB  
LH damp

*p*

1/7  
11/7

3

*fff*

HB - - - - -  
molto vibr.

SP  
senza vibr.

SPLE

*ff*

*mp*

268  $\frac{3}{4}$   $\frac{3}{8}$   $\frac{5}{16}$   $\frac{9}{16}$   $\frac{13}{16}$   $\frac{4}{8}$

Fl.  $sfz$

Ob.  $p$   $mf$

B. Cl.  $p$

Bn. Reed alone:  $p$

Hn.  $pp$   $p$

Tpt.  $p$  1/2 valve

Trbo.  $mf$

Perc. China, Thunder, Toms, Gr.G., Hi-hat, Guiro, Toms, Kick  $p$

Pno.  $mp$   $15^{ma}$

Ped.

Vn. 1 scratch LH damp  $mf$   $p$  (SPE)

Vn. 2  $p$

Vla.  $p$  I, II, III, IV, CLB, LH damp

Vc.  $p$  (SP) arco

Db.  $p$  III, IV, 4., 7., 5., 9., 6.

*(Musical score with various dynamics, articulations, and performance instructions for various instruments.)*

273

Fl.

Ob.

B. Cl.

Bn.

Hn.

Tpt.

Trbo.

Perc.  
Hi-hat  
Guitro  
Toms  
Kick

Pno.  
Ped.

Vn. 1

Vn. 2

Vla.

Vc.

Db.

4/8

4/4

3/4

5/8

7/8

3/8

*p*

*p*

*p*

*p*

1/2 valve

1/1 valve

15<sup>ma</sup>

8<sup>va</sup>

ORD

IV

*pizz.* *arco*

*pizz.* *arco* *HB*

*mf*

*mf*

*p*

*mf*

1/7. II/7.

1/4.

# I

278  $\frac{3}{8}$   $\frac{3}{16}$   $\frac{11}{16}$   $\frac{7}{16}$   $\frac{2}{4}$   $\frac{5}{4}$

Fl.  $\frac{3}{8}$   $\frac{3}{16}$   $\frac{11}{16}$   $\frac{7}{16}$   $\frac{2}{4}$   $\frac{5}{4}$

Ob.  $\frac{3}{8}$   $\frac{3}{16}$   $\frac{11}{16}$   $\frac{7}{16}$   $\frac{2}{4}$   $\frac{5}{4}$  M 3 *fff*

B. Cl.  $\frac{3}{8}$   $\frac{3}{16}$   $\frac{11}{16}$   $\frac{7}{16}$   $\frac{2}{4}$   $\frac{5}{4}$  *fff* M 3

Bn.  $\frac{3}{8}$   $\frac{3}{16}$   $\frac{11}{16}$   $\frac{7}{16}$   $\frac{2}{4}$   $\frac{5}{4}$  *fff* Bassoon

Hn.  $\frac{3}{8}$   $\frac{3}{16}$   $\frac{11}{16}$   $\frac{7}{16}$   $\frac{2}{4}$   $\frac{5}{4}$  1/1 valve *pp* *sfz* *fff*

Tpt.  $\frac{3}{8}$   $\frac{3}{16}$   $\frac{11}{16}$   $\frac{7}{16}$   $\frac{2}{4}$   $\frac{5}{4}$  *fff*

Trbo.  $\frac{3}{8}$   $\frac{3}{16}$   $\frac{11}{16}$   $\frac{7}{16}$   $\frac{2}{4}$   $\frac{5}{4}$  *fff*

Perc.  $\frac{3}{8}$   $\frac{3}{16}$   $\frac{11}{16}$   $\frac{7}{16}$   $\frac{2}{4}$   $\frac{5}{4}$  Hi-hat *mf* *fff*  
 Guiro *mf*  
 Toms *mf*  
 Kick *mf*  
 prepare: RH: mallet  
 prepare: LH: mallet  
 China *mf*  
 Thunder *mf*  
 Toms *mf*  
 Gr.G. *mf*

Pno.  $\frac{3}{8}$   $\frac{3}{16}$   $\frac{11}{16}$   $\frac{7}{16}$   $\frac{2}{4}$   $\frac{5}{4}$  *fff* *8va*

Ped.  $\frac{3}{8}$   $\frac{3}{16}$   $\frac{11}{16}$   $\frac{7}{16}$   $\frac{2}{4}$   $\frac{5}{4}$

Vn. 1  $\frac{3}{8}$   $\frac{3}{16}$   $\frac{11}{16}$   $\frac{7}{16}$   $\frac{2}{4}$   $\frac{5}{4}$  scratch LH damp *fff* HB - - - - -  
*molto vibr.*

Vn. 2  $\frac{3}{8}$   $\frac{3}{16}$   $\frac{11}{16}$   $\frac{7}{16}$   $\frac{2}{4}$   $\frac{5}{4}$  *fff* HB - - - - -  
*molto vibr.*

Vla.  $\frac{3}{8}$   $\frac{3}{16}$   $\frac{11}{16}$   $\frac{7}{16}$   $\frac{2}{4}$   $\frac{5}{4}$  *fff* HB - - - - -  
*molto vibr.*

Vc.  $\frac{3}{8}$   $\frac{3}{16}$   $\frac{11}{16}$   $\frac{7}{16}$   $\frac{2}{4}$   $\frac{5}{4}$  arco *fff* HB - - - - -  
*molto vibr.*

Db.  $\frac{3}{8}$   $\frac{3}{16}$   $\frac{11}{16}$   $\frac{7}{16}$   $\frac{2}{4}$   $\frac{5}{4}$  *fff* HB - - - - -  
*molto vibr.*

283

Fl. *ff* M 3

Ob. *ff* M 3

B. Cl. *ff* M 3

Bn. *ff* M 3

Hn. *ff* M 3

Tpt. *ff* M 3

Trbo. *ff* M 3

Perc. China *ff* Thunder *f* Toms *ff* Gr.G. *mf* *fff* *ff*

Pno. *f* *mp* *f* *fff* *f*

Ped.

Vn. 1 *ff* *mp* *ff* *fff* *ff*

Vn. 2 *ff* *mp* *ff* *fff* *ff*

Vla. *ff* *mp* *ff* *fff* *ff*

Vc. *ff* *mp* *ff* *fff* *ff*

Db. *ff* *mp* *ff* *fff* *ff*

SP senza vibr. SPE HB - molto vibr. SP senza vibr.

288  $\frac{2}{4}$   $\frac{4}{4}$   $\frac{2}{4}$   $\frac{3}{8}$   $\frac{4}{4}$

Fl.  $p$

Ob.  $p$

B. Cl.  $p$

Bn. Reed alone:  $p$

Hn.  $sfz$   $pp$   $p$

Tpt. Whirly tube (G):  $mf$   $p$

Trbo.  $p$   $mf$

Perc. China  $f$   $mf$   $sfz$   
 Thunder Toms  
 Gr.G. Hi-hat  
 Guiro  
 Toms  
 Kick

RH: light stick  
 LH: friction mallet

Pno.  $mp$

Ped.

Vn. 1  $mp$   $p$   $mf$   $p$   $mf$   $pizz.$   $+$

Vn. 2  $mp$   $p$   $mf$   $p$   $mf$   $pizz.$   $+$

Vla.  $mp$   $p$   $mf$   $p$   $mf$   $pizz.$   $+$

Vc.  $mp$   $p$   $mf$   $p$   $mf$   $pizz.$   $+$

Db.  $mp$   $p$   $mf$   $p$   $mf$   $pizz.$   $+$

SPÉ

ORD

scratch  
LH damp

arco

ham. arco  
II / 5.

III / 6.

293

Fl. *sfz* *p* *sfz*

Ob. *mf* *p* *mf*

B. Cl. *mf*

Bn. *mf*

Hn. *pp* 1/2 valve 1/1 valve

Trpt. *mf* 1/2 valve

Trbo. *p* *mf* *p*

Perc. Hi-hat, Guiro, Toms, Kick

Pno. *8va*, *15ma*

Vn. 1 *p* (SPE), (ORD), (SPE)

Vn. 2 *p* (SPE), (ORD), (SPE)

Vla. *mf* *p* (ORD), (SPE)

Vc. *mf* *p* (SPE), (SP)

Db. *mf* *p* (SPE), (SP)



296

Fl. *p* 3 6

Ob. *p* 6

B. Cl. 3 6 3 6 3 6 3 6

Bn. 3 -3 3 -3 3 -3 3 -3 3

Hn. 1/2 valve *p* 1/1 valve 1/2 valve 1/1 valve

Tpt. 1/1 valve 1/2 valve *pp* 1/2 valve 7

Trbo. *mf* 3 *p* *mf* *p* *mf* *p* *mf* *p* *mf* *p*

Perc. Hi-hat, Guiro, Toms, Kick

Pno. 15<sup>ma</sup> 8<sup>va</sup> 15<sup>ma</sup> 8<sup>va</sup> 15<sup>ma</sup> 8<sup>va</sup> 15<sup>ma</sup>

Vn. 1 *mf* *p* 3 *ORD* IV 3 *ORD* IV 3 *ORD* IV 3

Vn. 2 *mf* *p* 3 *ORD* arco 3 *pizz.* 3 arco 3 *pizz.* 3 arco 3 *pizz.* 3 arco 3 *ORD*

Vla. III CLB LH damp *mf* *p* 3 *ORD* HB- arco *mf* *p* 3 HB- arco *mf* *p* 3 HB- arco *mf* *p* 3 HB- arco *mf* *p* 3 *ORD*

Vc. *mf* 3 *p* 3 *ORD* *mf* *p* 3 *ORD* *mf* *p* 3 *ORD* *mf* *p* 3 *ORD*

Db. II / 5. III / 6. I / 7. II / 7. I / 4. ham. arco *mf* *p* 3 ham. arco *mf* *p* 3 ham. arco *mf* *p* 3

299

**Fl.** *sfz* *sfz* *sfz*

**Ob.** *mf* *p*

**B. Cl.** *3* *6*

**Bn.** *3* *3* *3*

**Hn.** *sfz* *sfz* *sfz* *sfz* *sfz* *sfz* *sfz* *sfz* *p* *sfz*

**Tpt.** *1/1 valve* *sfz* *sfz* *sfz* *sfz* *sfz* *sfz* *sfz* *sfz* *sfz* *1/2 valve*

**Trbo.**

**Perc.** *Hi-hat* *Guero* *Ferns* *Kick*

**Pno.** *8<sup>va</sup>-* *15<sup>ma</sup>* *15<sup>ma</sup>* *15<sup>ma</sup>* *15<sup>ma</sup>*

**Ped.**

**Vn. 1** *scratch* *LH damp* *mf* *p* *ORD* *SPE* *ORD*

**Vn. 2** *8<sup>va</sup>-* *loco* *ORD* *SPE* *ORD* *SPE* *ORD* *SPE*

**Vla.** *SPE* *ORD* *SPE* *ORD* *SPE* *ORD* *SPE*

**Vc.** *pizz.* *arco* *SPE* *pizz.*

**Db.** *II/5.* *III/6.* *1/4.* *ham.* *arco* *III 4.* *7.* *5.* *9.* *6.*

302

This page contains a musical score for measures 302 through 305. The score is arranged in a standard orchestral layout with the following parts:

- Flute (Fl.):** Features a melodic line with sixteenth-note patterns and triplet markings.
- Oboe (Ob.):** Plays a melodic line with dynamic markings of *p* and *mf*.
- Bass Clarinet (B. Cl.):** Provides a rhythmic accompaniment with sixteenth-note patterns.
- Bassoon (Bn.):** Plays a melodic line with dynamic markings of *mf* and *p*.
- Horn (Hn.):** Features a melodic line with dynamic markings of *pp* and *p*.
- Trumpet (Tpt.):** Plays a melodic line with dynamic markings of *mf* and *p*, including valve markings (1/1 valve, 1/2 valve).
- Trombone (Trbo.):** Provides a rhythmic accompaniment with dynamic markings of *mf* and *p*.
- Percussion (Perc.):** Includes Hi-hat, Guiro, Toms, and Kick, with specific rhythmic patterns.
- Piano (Pno.):** Features a complex accompaniment with sixteenth-note patterns and dynamic markings of *15ma*, *8va*, and *15ma*.
- Violin I (Vn. 1):** Plays a melodic line with dynamic markings of *mf* and *p*, including performance instructions like "scratch LH damp" and "sim."
- Violin II (Vn. 2):** Provides a rhythmic accompaniment with dynamic markings of *mf* and *p*.
- Viola (Vla.):** Plays a melodic line with dynamic markings of *mf* and *p*.
- Violoncello (Vc.):** Provides a rhythmic accompaniment with dynamic markings of *mf* and *p*.
- Double Bass (Db.):** Provides a rhythmic accompaniment with dynamic markings of *mf* and *p*.

The score includes various musical notations such as dynamics (*p*, *mf*, *pp*), articulation (accents, slurs), and performance instructions (e.g., "ORD", "SPE", "pizz.", "arco", "loco").

305

This page contains a musical score for measures 305 through 312. The score is arranged in a standard orchestral layout with the following parts and details:

- Flute (Fl.):** Measures 305-312, featuring a sixteenth-note melody with a sixteenth-note triplet in measure 305.
- Oboe (Ob.):** Measures 305-312, playing a sustained chord with a sixteenth-note triplet in measure 305. Dynamics range from *mf* to *p*.
- Bass Clarinet (B. Cl.):** Measures 305-312, playing a sixteenth-note melody with a sixteenth-note triplet in measure 305.
- Bassoon (Bn.):** Measures 305-312, playing a sixteenth-note melody with sixteenth-note triplets throughout.
- Horn (Hn.):** Measures 305-312, playing a sixteenth-note melody with a sixteenth-note triplet in measure 305. Includes valve markings for 1/2 and 1/1 valve. Dynamics include *pp*.
- Trumpet (Tpt.):** Measures 305-312, playing a sixteenth-note melody with a sixteenth-note triplet in measure 305. Includes valve markings for 1/2 and 1/1 valve.
- Trumpet (Trbo.):** Measures 305-312, playing a sixteenth-note melody with a sixteenth-note triplet in measure 305. Dynamics range from *mf* to *p*.
- Percussion (Perc.):** Includes Hi-hat, Guiro, Tom, and Kick. Features rhythmic patterns and a sixteenth-note triplet in measure 305.
- Piano (Pno.):** Measures 305-312, playing a sixteenth-note accompaniment with a sixteenth-note triplet in measure 305. Includes markings for 8va and 15ma.
- Pedals (Ped.):** Indicated at the bottom of the piano part.
- Violin I (Vn. 1):** Measures 305-312, playing a sixteenth-note melody with a sixteenth-note triplet in measure 305. Includes markings for SPE, ORD, pizz., arco, and LH damp. Dynamics range from *mf* to *p*.
- Violin II (Vn. 2):** Measures 305-312, playing a sixteenth-note melody with a sixteenth-note triplet in measure 305. Includes markings for ORD, pizz., arco, and loco. Dynamics range from *mf* to *p*.
- Viola (Vla.):** Measures 305-312, playing a sixteenth-note melody with a sixteenth-note triplet in measure 305. Includes markings for ORD, pizz., arco, and LH damp. Dynamics range from *mf* to *p*.
- Violoncello (Vc.):** Measures 305-312, playing a sixteenth-note melody with a sixteenth-note triplet in measure 305. Includes markings for SPE, ORD, and HB. Dynamics range from *mf* to *p*.
- Double Bass (Db.):** Measures 305-312, playing a sixteenth-note accompaniment with a sixteenth-note triplet in measure 305. Includes markings for ham., arco, and Roman numerals (II/5, III/6, I/4).

308

This musical score page covers measures 308 to 310. It features a full orchestral and band arrangement. The instruments and their parts are as follows:

- Flute (Fl.):** Starts with a *sfz* dynamic, followed by a *p* dynamic. Includes a trill in measure 308.
- Oboe (Ob.):** Features sixteenth-note patterns with sixteenth rests and sixteenth notes.
- Bass Clarinet (B. Cl.):** Similar to the Oboe part, with sixteenth-note patterns.
- Bassoon (Bn.):** Features triplet patterns.
- Horn (Hn.):** Includes valve markings (1/2 valve, 1/1 valve) and dynamics (*p*, *sfz*, *pp*).
- Trumpet (Tpt.):** Includes valve markings (1/1 valve) and dynamics (*pp*, *sfz*, *p*).
- Trombone (Trbo.):** Includes dynamics (*p*, *mf*).
- Percussion (Perc.):** Includes Hi-hat, Guiro, Toms, and Kick. The Hi-hat part has a wavy line indicating a tremolo effect.
- Piano (Pno.):** Features a complex accompaniment with sixteenth-note patterns and triplets. Includes markings for *15<sup>ma</sup>* and *8<sup>va</sup>*.
- Violin I (Vn. 1):** Includes dynamics (*mf*, *p*) and a "scratch LH damp" instruction.
- Violin II (Vn. 2):** Includes dynamics (*mf*, *p*) and a "scratch LH damp" instruction.
- Viola (Vla.):** Includes dynamics (*mf*, *p*) and a "scratch LH damp" instruction.
- Cello (Vc.):** Includes dynamics (*mf*, *p*) and a "scratch LH damp" instruction.
- Double Bass (Db.):** Includes dynamics (*mf*, *p*) and a "scratch LH damp" instruction.

The score includes various musical notations such as dynamics (*sfz*, *p*, *pp*, *mf*), articulation (accents, slurs), and performance instructions (e.g., "scratch LH damp", "ORD", "SP").

311

FL. *sfz* *p* *sfz*

Ob. *mf* *p*

B. Cl. *6*

Bn. *3*

Hn. *sfz* *sfz* *sfz* *sfz* *sfz* *sfz* *sfz* *sfz* *sfz* *pp* *7* *p*

Tpt. *1/2 valve +* *1/1 valve* *1/2 valve +*

Trbo. *p* *mf* *p* *mf* *p* *mf* *p* *mf* *p*

Perc. Hi-hat, Guiro, Tom-toms, Kick

Pno. *15<sup>ma</sup>* *8<sup>va</sup>* *8<sup>va</sup>* *15<sup>ma</sup>* *15<sup>ma</sup>*

Ped.

Vn. 1 *(SPE)* *(ORD)* *scratch* *LH damp* *mf*

Vn. 2 *(ORD)* *(SPE)* *(SP)* *(ORD)* *arco* *3* *pizz.* *arco* *3* *pizz.* *arco* *3* *pizz.* *arco* *3*

Vla. *(ORD)* *(SPE)* *CLB* *LH damp* *(ORD)* *HB* *pizz.* *HB* *pizz.* *HB* *pizz.* *HB* *pizz.* *HB*

Vc. *(SPE)* *(ORD)* *pizz.* *(ORD)* *arco* *(SP)*

Db. *III* *IV* *1/7* *1/4* *ham.* *arco* *II/5* *III/6* *III* *IV*

314

Fl. *sfz* *p* *sfz* *p*

Ob. *mf* *p* *mf* *p*

B. Cl. *mf* *p*

Bn. *mf* *p*

Hr. *pp* 1/2 valve + 1/1 valve + 3

Tpt. + 1/1 valve + 1/2 valve 7

Trbo. *mf* *p*

Perc. Hi-hat Guiro Toms Kick

Pno. (15<sup>ma</sup>) 15<sup>ma</sup> 15<sup>ma</sup> 8<sup>va</sup> 15<sup>ma</sup>

Ped.

Vn. I *p* *mf* *sim.* scratch LH damp

Vn. II *pizz.* *arco* *loco*

Vla. *pizz.* *HB* *mf* *p*

Vcl. *mf* *SPD* *SP*

Db. I/7, II/7, III/6, IV, II/5, I/7

# J

317

1/4 4/4 3/4 4/4 5/8

FL. *mf* *p* *mf*

Ob.

B. Cl.

Bn. Bassoon:

Hn. *p* 1/2 valve

Tpt. Whirly tube (F#): *mf*

Trbo. *mf* *p* *mf*

Perc. RH: mallet LH: mallet  
Hi-hat China  
Guero Thunder  
Toms < Gr.G.  
Kick *sfz* *f*

Pno. *mp* 15<sup>ma</sup>

Vn. 1 *p* *mp* (ORD) IV

Vn. 2 *mp* pizz. arco (SP)

Vla. *mf* *p* HB--- CLB LH damp

Vc. *mf* (ORD) HB-----

Db. *mp* (SPE)



322

Fl. *ff* *p*

Ob. *fff* *p*

B. Cl. *fff* *p*

Bn. *ff* *p* Reed alone:

Hn. *fff* *sfz* *p* *pp* *sfz* *p*

Tpt. *fff* *p*

Trbo. *fff* *p*

Perc. China *ff* *mf* *p* *ppp*

Thunders Gr.G.

Pno. *f* *fff* *mp*

Ped.

Vn. 1 *ff* *fff* *p* *mf* *p*

Vn. 2 *ff* *fff* *p*

Vla. *ff* *fff* *p*

Vc. *ff* *fff* *p* *mf* *p*

Db. *ff* *fff* *p* *ham.* *arco*

K

326

Fl. 326

Ob. 326 *mf*

B. Cl. 326

Bn. 326

Hn. 326

Tpt. 326

Trbo. 326

Perc. China 3  
Thunder 3  
Toms ← 3  
Gr.G. *p*

Pno. 326 *8va*

Ped.

Vn. 1 326 *SPE*

Vn. 2 326 *SPE* pizz. + arco

Vla. 326 *SPE* pizz. + arco *mf*

Vc. 326 *SPE*

Db. 326 ham. 3

M 1 *ff*

*fff* Bassoon: M 1 *ff*

*fff*

*fff*

*fff*

*fff*

*fff* *mf* *ff*

*fff* *f*

HB-----, *fff* molto vibr. *SPE* senza vibr. *ff*

HB-----, *fff* molto vibr. *SPE* senza vibr. *ff*

HB-----, *fff* molto vibr. *SPE* senza vibr. *ff*

HB-----, *fff* molto vibr. *SPE* senza vibr. *ff*

arco HB-----, *fff* molto vibr. *SPE* senza vibr. *ff*

330

Fl. M 2 M 1 M 2 M 3

Ob. M 2 M 2

B. Cl. M 2 M 1 M 3

Bn. M 2 M 1 M 3

Hr. M 2 M 1 M 3

Tpt. M 2 M 1 M 3

Trbo. M 2 M 1 M 3

Perc. China, Thunder, Toms, Gr.G. *f ff f ff mf ff L.V. sempre*

Pno. *mp f mp f fff f mp*

Vn. 1 *mp ff mp ff fff senza vibr. ff mp*

Vn. 2 *mp ff mp ff fff senza vibr. ff mp*

Vla. *mp ff mp ff fff senza vibr. ff mp*

Vc. *mp ff mp ff fff senza vibr. ff mp*

Db. *mp ff mp ff fff senza vibr. ff mp*

HB molto vibr. senza vibr. SPE

SP

330

336  $\frac{4}{4}$  M 3  $\frac{8}{8}$   $\frac{4}{4}$  M 1 M 1  $\frac{8}{8}$

Fl. 336 M 1 M 3 M 3

Ob. 336 M 1 M 3 M 3

B. Cl. 336 M 1 M 3 M 3

Bn. 336 M 3 M 1 M 1

Hn. 336

Tpt. 336

Trbo. 336

Perc. China  
Thunder  
Toms  
Gr.G.  
*ff* *f* *fff* *f* *ff* *fff* *fff* *fff* *f* *fff*

Pno. 336 *f* *mp* *fff* *mp* *f* *fff* *f* *fff* *mp*

Ped.

Vn. 1 336 (SP) (SPE) HB----- (SPE) HB----- (SP) HB----- (SPE) HB-----  
*ff* *mp* *fff* *mp* *fff* *fff* *mp* *mp*

Vn. 2 336 (SP) (SPE) HB----- (SPE) HB----- (SP) HB----- (SPE) HB-----  
*ff* *mp* *fff* *mp* *fff* *fff* *mp* *mp*

Vla. 336 (SP) (SPE) HB----- (SPE) HB----- (SP) HB----- (SPE) HB-----  
*ff* *mp* *fff* *mp* *fff* *fff* *mp* *mp*

Vc. 336 (SP) (SPE) HB----- (SPE) HB----- (SP) HB----- (SPE) HB-----  
*ff* *mp* *fff* *mp* *fff* *fff* *mp* *mp*

Db. 336 (SP) (SPE) HB----- (SPE) HB----- (SP) HB----- (SPE) HB-----  
*ff* *mp* *fff* *mp* *fff* *fff* *mp* *mp*

340

4/4

M 2

M 3

Fl.

Ob.

B. Cl.

Bn.

Hr.

Tpt.

Trbo.

Perc.

China

Thunder

Toms

Gr.G.

f

ff

f

ff

ff

Pno.

Ped.

Vn. 1

Vn. 2

Vla.

Vc.

Db.

HB - molto vibr.

HB - molto vibr.

HB - molto vibr.

HB - molto vibr.

HB - molto vibr.

HB - molto vibr.

SPE

senza vibr.

SPE

SPE

SPE

SPE

mp

mp

mp

mp

mp

mp

ff

ff

ff

ff

ff

ff

**L**

♩ = 60

*Calmo*

345

Fl. <sup>345</sup> whistle tone *p*

Ob. <sup>345</sup> Whirly tube (E): *mf*

B. Cl.

Bn. <sup>345</sup> Tube (E):

Hn. <sup>345</sup> (ram) *mp*

Tpt. <sup>345</sup> Whirly tube (H):

Trbo. <sup>345</sup>

Perc. <sup>345</sup> China *sffz* RH: bow LH: soft gr. c. mallet *pp* *secco*

Pno. <sup>345</sup>

Ped.

Vn. 1 <sup>345</sup> 1 (ORD) *pp*

Vn. 2 <sup>345</sup>

Vla. <sup>345</sup>

Vc. <sup>345</sup>

Db. <sup>345</sup> 6 (ST) *pp*

351

351  
Fl.

351  
Ob.

351  
B. Cl.

351  
Bn.

351  
Hn.

351  
Tpt.

351  
Trbo.

China  
Thunder  
Toms  
Gr.G.

351  
Pno.

351  
Ped.

351  
Vn. 1

351  
Vn. 2

351  
Vla.

351  
Vc.

351  
Db.

*p*

*p*

*mp*

*mp*

*mp*

(ram)

(ram)

*mp*

bowed crotales: <sup>15<sup>mo</sup></sup>

*mp* scrape

8<sup>vb</sup> -----  
Ped. sempre

(ORD)

(ORD)

(ST) →

(SP) →

(ST)

357

Fl. *p*

Ob.

B. Cl. *p*

Bn. *p*

Hn.

Tpt.

Trbo.

Perc. China, Thunder, Toms, Gr.G. bowed crotales: *15<sup>ma</sup>*

Pno. *scrape*

Ped. *8<sup>va</sup>-*

Vn. 1

Vn. 2 *mp*

Vla. *mp* (ORD)

Vc. *mp*

Db. (ST) (SP) (SP) (ST) *mp*



362

This page of a musical score contains measures 362 through 365. The instruments and their parts are as follows:

- Flute (Fl.):** Measures 362-365. Measure 365 features a *p* (piano) dynamic marking.
- Oboe (Ob.):** Measures 362-365. Measure 365 features a *p* dynamic marking.
- Bass Clarinet (B. Cl.):** Measures 362-365. Measure 365 features a *p* dynamic marking.
- Bassoon (Bn.):** Measures 362-365. Measure 365 features a *p* dynamic marking.
- Horn (Hn.):** Measures 362-365.
- Trumpet (Tpt.):** Measures 362-365.
- Trumpet/Bass (Trbo.):** Measures 362-365. Measure 365 includes triplet markings.
- Percussion (Perc.):** Includes China, Thunder, Toms, and Gr.G. Measures 362-365. Includes *15<sup>ma</sup>* and *bowed crotales* markings.
- Piano (Pno.):** Measures 362-365. Includes *scrape* and *g<sup>tr</sup>* markings.
- Pedal (Ped.):** Measures 362-365.
- Violin 1 (Vn. 1):** Measures 362-365.
- Violin 2 (Vn. 2):** Measures 362-365. Measure 365 features *mp* (mezzo-piano) dynamic markings.
- Viola (Vla.):** Measures 362-365. Measure 365 features *mp* dynamic markings.
- Violoncello (Vc.):** Measures 362-365. Measure 365 features *mp* dynamic markings.
- Double Bass (Db.):** Measures 362-365. Includes *ST* and *SP* markings.

367

Fl. *p* *mf* *cresc. poco a poco*

Ob.

B. Cl. *p* *mp* (EX)

Bn. *p* *mf* *cresc. poco a poco* finger-ram

Hn. *p* E/5

Tpt. *mf*

Trbo. *p*

Perc. *prepare:*  
RH: hard mallet/stick (thunder)  
China  
Thunder  
Toms  
Gr.G. *p* *cresc. poco a poco*

Pno. *scrape* *mp* *cresc. poco a poco*

Ped. *8<sup>th</sup>*

Vn. 1 *pp* *mp*

Vn. 2 *pp*

Vla. *mp* *pp* *mp*

Vc. *pp* *mp*

Db. *p* *cresc. poco a poco* (SP) (ST) (SP) (ST) (ORD)

# M accel.

371  $\frac{2}{4}$   $\frac{3}{4}$   $\frac{4}{4}$  accel.

Fl. 371  $f$  accel.

Ob. Pan-tube: 371  $mf$  *cresc. poco a poco*  $f$  accel.

B. Cl. 371  $f$  accel.

Bn. 371  $f$  accel. IN EX IN EX IN EX

Hr. 371 *cresc. poco a poco* E/7. E/9. E/11. accel. E/13.  $mf$  harm. gliss.

Tpt. 371 accel.  $f$   $mf$   $f$

Trbo. 371  $mf$  accel.

Perc. China 371  $mf$   $f$  accel. RH: hard mallet/stick (thunder) LH: soft gr. c. mallet  
Thunder  
Toms  
Gr.G.

Pno. 371  $f$  accel.

Ped.

Vn. 1 371  $p$   $mf$   $mp$   $f$  accel.

Vn. 2 371  $mp$   $p$   $mf$   $mp$   $f$  accel.

Vla. 371  $p$   $mf$   $mp$   $f$  accel.

Vc. 371  $p$   $mf$   $mp$   $f$  accel.

Db. 371  $f$  accel.

♩ = 90

375

Fl.

Ob. Whirly tube (E):  
*mf*

B. Cl.

Bn. IN EX IN EX

Hn.

Tpt. *mf* *f* *mf* *f*

Trbo.

Perc. China  
Thunder  
Toms ←  
Gr.G.

Pno.

Ped.

Vn. 1

Vn. 2

Vla.

Vc.

Db.

378

378

Fl.

Ob.

B. Cl.

Bn.

Hn.

Tpt.

Trbo.

Perc.

Pno.

Ped.

Vn. 1

Vn. 2

Vla.

Vc.

Db.

Whirly tube (F):

*mf*

finger-release:

*sfz*

China  
Thunder  
Toms  
Gr.G.

damp!

LH damp

*sfz*

6