

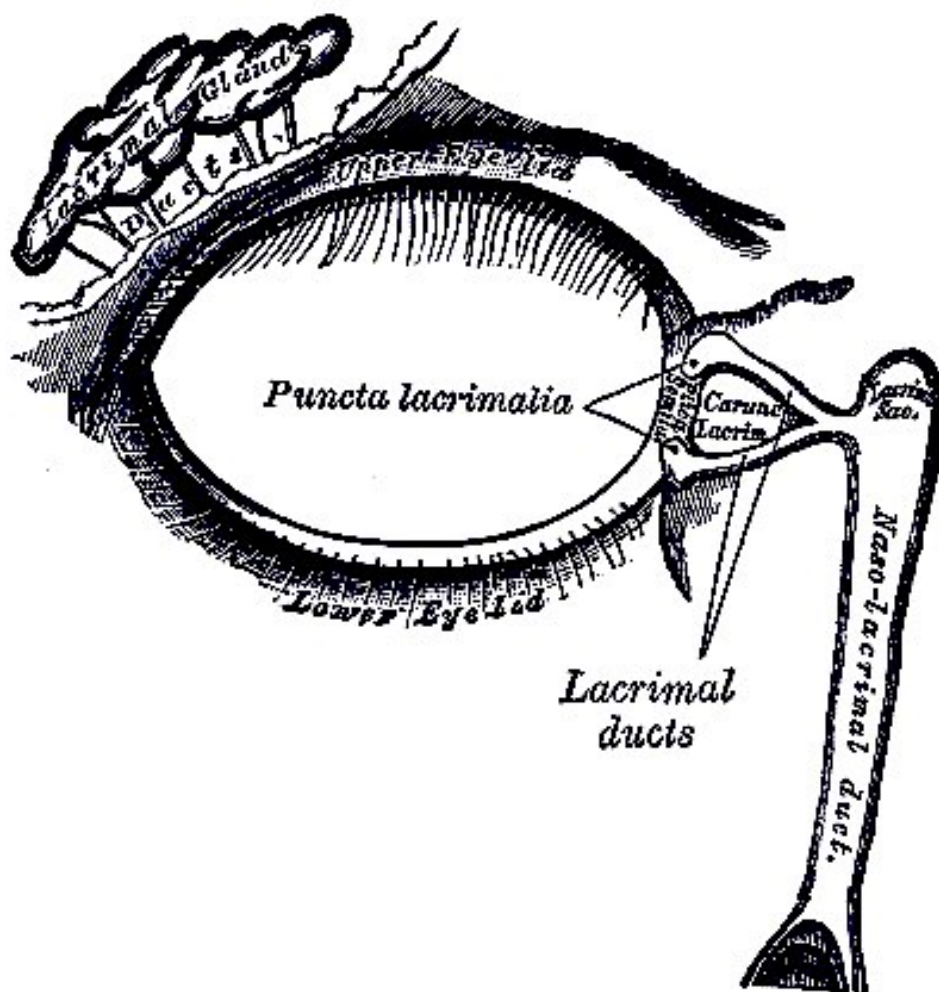
# Apparatus Lacrimalis

For large ensemble (14 musicians) and choir (SATB)

Duration: 8'40"

Morten Ladehoff

2020



Comissioned by Aarhus Sinfonietta

Supported by





# Instrumentation

Flute

Oboe + flex tube [approx. 17 mm x 2 mtr]

Bass clarinet in Bb

Bassoon

Horn in F

Trumpet in C [+ harmon mute]

Trombone [+ harmon mute]

Percussion:

*Crotales [upper octave]*

*Wood block [medium]*

*Thunder sheet*

*Tom [large] prepared with chains or similar to produce trashy sound*

*Bass drum [gran cassa]*

Guitar [+ plectrum]

Violin 1

Violin 2

Viola

Cello

Double bass



# Performance notes

## All

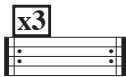
The title 'Apparatus Lacrimalis' is the medical term for the physiological system producing tears. This piece illuminates the ambiguity of weeping as both an emotional expression and a purely mechanical function.

Excerpts from the following music and literature are used:

- 2. movement from the Bach-cantata 'Weinen Klagen, Sorgen, Zagen' (BWV 12).
- The Dowland-song 'Flow not so fast ye fountains'.
- 'Metamorphoses book VI' (in latin) by Ovid - about Niobe and her eternal tears.

**(p)** **(f)**

The dynamics in parentheses are 'action'-dynamics. They indicate the effort/energy put into the notes and not necessarily the actual dynamic level.

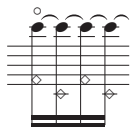


Play the measure(s) 3 times all in all.

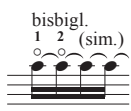
## Woodwind/brass



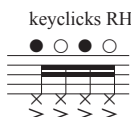
Triangular notes = tongue ram (flute, brass)/slap tongue (clarinet)/flap tongue (bassoon). Fingering and resulting pitch as indicated (or an octave below) or the note in parantheses.



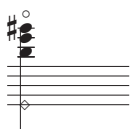
Bisbigliando of harmonics. Diamond notehead = fundamental fingering. Ordinary notehead = sound.



Bisbigliando - alternating between 2 different fingerings.

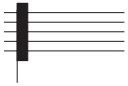


Exaggerated keyclicks. Solid circle = closed keys [in this case with right hand while left hand have closed keys all the time] and open circle = open keys.



Multiphonic of harmonics. Diamond notehead = fundamental fingering. Ordinary noteheads = approx. sound.

multiph. (wide spectrum)

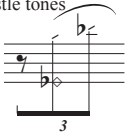


Chosen well-responding multiphonic with a wide and inharmonic spectrum.



Jet wistle [flute]. Diamond notehead = fundamental fingering.

whistle tones



Whistle tones [flute]. Diamond notehead = fundametal fingering. Clear pitches and little air-noise.

## Chorus

**Text:**

'Et lacrimas etiam nunc marmora manant' [and to this day the marple drips with tears].

'Weinen' [crying].

'Must still fall dropping'.

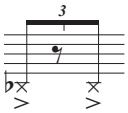


Triangular notehead = without voice.

## Strings

⊖ RH ⊖ LH

Damp [right hand, left hand].



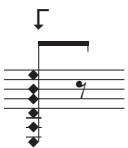
Bend the 6th string outside the fretboard [guitar]. Noisy and percussive sound.

(ST) (SP) (ASP)

Sul tasto, sul ponticello, alto sul ponticello.

clb

Col legno battuto



Rasgueado [guitar] at 'the wrong side' between LH and nut. From 1st to 6th string.

Score in C

Apparatus Lacrimalis

Morten Ladehoff  
2020

Flute  $\text{♩} = 60$   
Flex tube (no specific pitch)  
tongue ram  
*p sempre*

Oboe/flex tube  
*f*

Bass Clarinet  
open slap  
*sfz*

Bassoon  
flap tongue  
*p sempre*

Horn in F  
air (noise)  
*(p)*  
tongue ram  
*p sempre*

Trumpet in C  
tongue ram  
*p sempre*

Trombone  
air (noise)  
*(p)*  
tongue ram  
*p sempre*

Percussion  
Bass drum  
damp!  
*mp*

Guitar

Chorus (SATB)  
 $\text{♩} = 60$   
no voice  
*mp* T  
no voice  
*mp* D  
no voice  
*mp* P  
no voice  
*mp* K  
*p* t  
*p* t  
*pp* ord. e  
*pp* ord. e

Violin I  
con sord.  
*pp*

Violin II  
con sord.  
*mf*

Viola  
*mf*

Cello  
*mf*

Contrabass  
pizz. ('buzzing' sound)  
molto vibr. (slow)  
*f*  
IV (♯) (SP)  
*p*  
(gliss. harmonics)

8

Fl.

Ob./Flex

B. Cl. *pizz. (slap tongue)*  
*p sempre*

Bsn.

Hn.

C Tpt.

Tbn.

Perc. *Crotales (bowed)*  
*p*

Gtr. *p*  
6 5 6

Ch. *pp*  
la — ma  
*pp*  
cri —  
*p* >  
s  
*p* >  
s

Vln. I

Vln. II *pp*  
III

Vla. *SF*  
IV (e)  
*p*  
(gliss. harmonics)

Vc.

Cb.





20

Fl.

Ob./Flex

B. Cl.

Bsn.

Hn.

C Tpt.

Tbn.

Perc.

Gtr.

Ch.

Vln. I

Vln. II

Vla.

Vc.

Cb.

5

*p*

con sord. 'Harmon' (stem in)

6 5 6

*p*

*pp*

nu..(ng) \_\_\_\_\_

*pp*

nu..(ng) \_\_\_\_\_

*p* >

k

*p* >

k

*pp*

III (SP)  
IV (E)

*p*

↑

24

Fl.

Ob./Flex

B. Cl.

Bsn.

Hn.

C Tpt.

Tbn.

Perc.

Gtr.

Ch.

Vln. I

Vln. II

Vla.

Vc.

Cb.

Oboe

(wa-wa openings)

3

<○> <○> <○>

*p*

15

5

*p*

6

8

8

*pp*

mo

*pp*

mar

ra

*pp*

IV (SP)

*p*

I

I (SP)

*p*

28

Fl.

Ob./Flex

B. Cl.

Bsn.

Hn.

C Tpt.

Tbn.

Perc.

Gtr.

Ch.

Vln. I

Vln. II

Vla.

Vc.

Cb.

*p*

con sord. 'Harmon' (stem in)

(wa-wa openings)

*pp*

ma

na(n)

*p*

*p*

III (SF)

IV

*p*

(SF)

*p*

5

6

t

t

This page of a musical score contains measures 32 through 35. The instruments and their parts are as follows:

- Flute (Fl.):** Measure 32 features a five-measure rest with a *p* dynamic marking.
- Oboe/Flex (Ob./Flex.):** Measures 32-35 are entirely silent.
- Bassoon (B. Cl.):** Measures 32-35 are entirely silent.
- Bassoon (Bsn.):** Measures 32-35 are silent, with a few notes in measure 34.
- Horn (Hn.):** Measures 32-35 are silent.
- Trumpet (C Tpt.):** Measures 32-35 are silent, with a triplet of notes in measure 35.
- Trombone (Tbn.):** Measures 32-35 are silent.
- Percussion (Perc.):** Measures 32-35 feature a complex rhythmic pattern with a *p* dynamic marking.
- Guitar (Gtr.):** Measures 32-35 are silent, with a sixteenth-note figure in measure 34.
- Chamber Ensemble (Ch.):** Measures 32-35 are silent.
- Violin I (Vln. I):** Measures 32-35 are silent.
- Violin II (Vln. II):** Measures 32-35 feature a sustained, wavy line.
- Viola (Vla.):** Measures 32-35 are silent.
- Violoncello (Vc.):** Measures 32-35 are silent.
- Contrabass (Cb.):** Measures 32-35 are silent.

**A**

Fl. *pp*

Ob./Flex *p*

B. Cl.

Bsn.

Hn.

C Tpt.

Tbn. *pp* (gliss. harmonics)

Perc. *p*

Gtr. *p sempre*

**A**

Ch. *p sempre*  
Wei - - - - - nen,

Vln. I *pp*

Vln. II


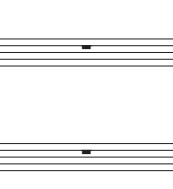


Vla. *p* con sord.


Vc. *p* con sord.

Cb. *sfz* con sord.

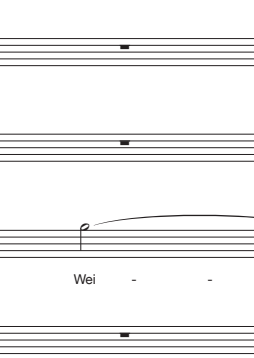
This page of a musical score includes parts for Flute (Fl.), Oboe/Flexible Horn (Ob./Flex.), Bass Clarinet (B. Cl.), Bassoon (Bsn.), Horn (Hn.), Trumpet (C Tpt.), Trombone (Tbn.), Percussion (Perc.), Guitar (Gtr.), Choir (Ch.), Violin I (Vln. I), Violin II (Vln. II), Viola (Vla.), Violoncello (Vc.), and Contrabass (Cb.).



The score begins at measure 40. The Flute part features a melodic line with a *p* dynamic marking and a five-measure phrase. The Percussion part has a rhythmic pattern with a *p* dynamic. The Trombone part has a melodic line with a *p* dynamic and a triplet. The Guitar part has a melodic line with a *p* dynamic. The Choir part has the lyrics "Wei - - - - - nen," with a *p sempre* dynamic marking. The Violin II part has a melodic line with a *pp* dynamic marking. The Violin I part has a melodic line with a *p* dynamic marking. The Viola, Violoncello, and Contrabass parts have melodic lines with a *p* dynamic marking. The Bass Clarinet, Bassoon, Horn, and Trumpet parts have melodic lines with a *p* dynamic marking. The Oboe/Flexible Horn part has a melodic line with a *p* dynamic marking. The Bass Clarinet and Bassoon parts have melodic lines with a *p* dynamic marking. The Horn part has a melodic line with a *p* dynamic marking. The Trumpet part has a melodic line with a *p* dynamic marking. The Trombone part has a melodic line with a *p* dynamic marking. The Percussion part has a rhythmic pattern with a *p* dynamic. The Guitar part has a melodic line with a *p* dynamic. The Choir part has the lyrics "Wei - - - - - nen," with a *p sempre* dynamic marking. The Violin II part has a melodic line with a *pp* dynamic marking. The Violin I part has a melodic line with a *p* dynamic marking. The Viola, Violoncello, and Contrabass parts have melodic lines with a *p* dynamic marking. The Bass Clarinet, Bassoon, Horn, and Trumpet parts have melodic lines with a *p* dynamic marking. The Oboe/Flexible Horn part has a melodic line with a *p* dynamic marking. The Bass Clarinet and Bassoon parts have melodic lines with a *p* dynamic marking. The Horn part has a melodic line with a *p* dynamic marking. The Trumpet part has a melodic line with a *p* dynamic marking. The Trombone part has a melodic line with a *p* dynamic marking. The Percussion part has a rhythmic pattern with a *p* dynamic. The Guitar part has a melodic line with a *p* dynamic. The Choir part has the lyrics "Wei - - - - - nen," with a *p sempre* dynamic marking. The Violin II part has a melodic line with a *pp* dynamic marking. The Violin I part has a melodic line with a *p* dynamic marking. The Viola, Violoncello, and Contrabass parts have melodic lines with a *p* dynamic marking.

44  
Fl.   
Ob./Flex.   
B. Cl.   
Bsn. 

44  
Hn.   
C Tpt.   
Tbn. 

44  
Perc.   
Gtr. 

44  
Ch. 

44  
Vln. I   
Vln. II   
Vla.   
Vc.   
Cb. 



48

Fl.

Ob./Flex

B. Cl.

Bsn.

Hn.

C Tpt.

Tbn.

Perc.

Gtr.

48

Ch.

48

Vln. I

Vln. II

Vla.

Vc.

Cb.

5

*p*

5

*p*

3

<O> <O> <O>

*p*

<O> <O> <O>

3

<O> <O> <O>

15

5

*p*

6

6

6

48

nen,

Wei - - - - - nen,

Wei - - - - - nen,

*p sempre*

Wei - - - - -

48

*pp*

*pp*

6

Fl. *52*

Ob./Flex

B. Cl.

Bsn.

Hn.

C Tpt.

Tbn.

Perc.

Gr.

*52*

Ch.

Wei - - - - - nen,

Wei - - - - - nen,

Wei - - - - -

- - - - - nen,

*52*

Vln. I

Vln. II

Vla.

Vc.

Cb.

*pp*

*pp*

*pp*

This page of a musical score, numbered 13, contains the following parts and markings:

- Fl.**: Flute part with two measures of sixteenth-note runs, each marked with a circled **50** and a *p* dynamic.
- Ob./Flex.**: Oboe/Flexible horn part, mostly silent.
- B. Cl.**: Bass Clarinet part with a few notes.
- Bsn.**: Bassoon part with a few notes.
- Hn.**: Horn part with a few notes.
- C Tpt.**: Trumpet part with triplet markings and a *p* dynamic.
- Tbn.**: Trombone part with a *p* dynamic.
- Perc.**: Percussion part with a circled **50** and a *p* dynamic.
- Gtr.**: Guitar part with a circled **50** and a *p* dynamic.
- Ch.**: Chorus with vocal lines and lyrics: "Wei - - - - - nen, Wei - - - - - nen, Wei - - - - - nen, Wei - - - - - nen,".
- Vln. I**: Violin I part with a circled **50** and a *pp* dynamic.
- Vln. II**: Violin II part with a *pp* dynamic.
- Vla.**: Viola part with a *pp* dynamic.
- Vc.**: Violoncello part with a *pp* dynamic.
- Cb.**: Contrabass part with a *pp* dynamic.

**B**

60

Fl.

Ob./Flex

B. Cl.

Bsn.

Hn.

C Tpt.

Tbn.

Perc.

Gr.

**B**

60

Ch.

Vln. I

Vln. II

Vla.

Vc.

Cb.

nen,

Wei - - - -

Wei - - - - nen,

Wei - - - - nen,

Wei - - - - nen,

*pp*

*pp*

*pp*

This page of a musical score, numbered 15, contains the following parts and markings:

- Flute (Fl.):** Features a melodic line with five-measure rests and a *p* dynamic marking.
- Oboe/Flexible (Ob./Flex.):** Features a melodic line with five-measure rests and a *p* dynamic marking.
- Bass Clarinet (B. Cl.):** Features a melodic line with five-measure rests.
- Bassoon (Bsn.):** Features a melodic line with five-measure rests.
- Horn (Hn.):** Features a melodic line with five-measure rests.
- Trumpet (C Tpt.):** Features a melodic line with three-measure rests and a *p* dynamic marking.
- Tuba (Tbn.):** Features a melodic line with five-measure rests and a *p* dynamic marking.
- Percussion (Perc.):** Features a melodic line with five-measure rests and a *p* dynamic marking.
- Guitar (Gtr.):** Features a melodic line with six-measure rests.
- Vocal Parts (Ch.):** Includes lyrics: "Wei - - - - - nen,". The vocal lines are spread across four staves.
- Violin I (Vln. I):** Features a melodic line with five-measure rests.
- Violin II (Vln. II):** Features a melodic line with five-measure rests and a *pp* dynamic marking.
- Viola (Vla.):** Features a melodic line with five-measure rests.
- Violoncello (Vc.):** Features a melodic line with five-measure rests and a *pp* dynamic marking.
- Contrabass (Cb.):** Features a melodic line with five-measure rests.

This page of a musical score, numbered 16, contains the following parts and markings:

- Fl.** (Flute): Starts at measure 68 with a melodic line, including a quintuplet of eighth notes.
- Ob./Flex.** (Oboe/Flexible Horn): Features a rhythmic pattern of eighth notes, marked *p*.
- B. Cl.** (Bass Clarinet): Provides a bass line with occasional rests.
- Bsn.** (Bassoon): Mirrors the Bass Clarinet part.
- Hn.** (Horn): Features a bass line with rests.
- C Tpt.** (C Trumpet): Includes triplet eighth notes, marked *p*.
- Tbn.** (Trombone): Features triplet eighth notes, marked *p*.
- Perc.** (Percussion): Includes a quintuplet of eighth notes, marked *p*.
- Gr.** (Guitar): Features sixteenth-note patterns, marked with a '6'.
- Vocal Parts (Ch.):** Includes lyrics: "Wei - - - - - nen,". The vocal lines are spread across several staves.
- Vln. I & II** (Violins): Violin I has a long note with a hairpin crescendo leading to *pp*. Violin II has a similar long note.
- Vla.** (Viola): Features a long note, marked *pp*.
- Vc.** (Violoncello): Features a long note.
- Cb.** (Cello): Features a long note, marked *pp*.

72 Fl. *p*

Ob./Flex *p*

B. Cl.

Bsn.

72 Hn.

C Tpt. *p*

Tbn. *p*

72 Perc. *p*

Gtr. *p*

72 Ch. Wei - - - - - nen, Wei - - - - - nen, Wei - - - - - nen, Wei - - - - - nen,

Vln. I *pp*

Vln. II *pp*

Vla.

Vc. *pp*

Cb.

Detailed description: This page of a musical score, numbered 17, contains staves for various instruments and vocal parts. The woodwind section includes Flute (Fl.), Oboe/Flexible Horn (Ob./Flex), Bass Clarinet (B. Cl.), Bassoon (Bsn.), Horn (Hn.), Trumpet (C Tpt.), and Trombone (Tbn.). The percussion (Perc.) and guitar (Gtr.) parts are also present. The string section consists of Violin I (Vln. I), Violin II (Vln. II), Viola (Vla.), Violoncello (Vc.), and Contrabass (Cb.). The vocal part (Ch.) features lyrics in German: "Wei - - - - - nen, Wei - - - - - nen, Wei - - - - - nen, Wei - - - - - nen,". The score includes dynamic markings such as *p* (piano) and *pp* (pianissimo), and various musical notations like triplets, slurs, and accents. The page number 72 is indicated in a box at the beginning of several staves.

This page of a musical score covers measures 76 through 79. The instrumentation includes Flute (Fl.), Oboe/Flexible Horn (Ob./Flex.), Bass Clarinet (B. Cl.), Bassoon (Bsn.), Horn (Hn.), Contrabass Trombone (C Tpt.), Trombone (Tbn.), Percussion (Perc.), Guitar (Gtr.), Chorus (Ch.), Violin I (Vln. I), Violin II (Vln. II), Viola (Vla.), Violoncello (Vc.), and Contrabass (Cb.).

**Measures 76-79:**

- Fl.:** Features a melodic line with sixteenth-note patterns and rests. Dynamics include *p* and *pp*.
- Ob./Flex.:** Plays a rhythmic pattern of eighth notes with a *p* dynamic.
- B. Cl.:** Provides a simple harmonic accompaniment.
- Bsn.:** Similar to the Bass Clarinet, with a few notes.
- Hn.:** Plays a few notes, including a *p* dynamic.
- C Tpt.:** Features triplet patterns with a *p* dynamic.
- Tbn.:** Plays a rhythmic pattern with a *p* dynamic.
- Perc.:** Features a melodic line with sixteenth-note patterns and rests. Dynamics include *p*.
- Gtr.:** Plays a melodic line with sixteenth-note patterns and rests.
- Ch.:** Vocalists sing the word "Wei" followed by "nen," in a call-and-response pattern. The lyrics are: "Wei - - - nen, Wei - - - nen, Wei - - - nen, Wei - - - nen." Dynamics include *pp*.
- Vln. I & II:** Violins play a melodic line with a *pp* dynamic.
- Vla.:** Viola plays a melodic line with a *pp* dynamic.
- Vc. & Cb.:** Violoncello and Contrabass play a melodic line with a *pp* dynamic.



80

Fl.

Ob./Flex

B. Cl.

Bsn.

Hn.

C Tpt.

Tbn.

Perc.

Gtr.

Ch.

Vln. I

Vln. II

Vla.

Vc.

Cb.

*p*

*pp*

*senza sord.*

Wei - - - nen, Wei - - - nen, Wei - - - nen, Wei - - - nen

**C**  $\text{♩} = 90$

Fl. *jet whistle* *(p)* *ff*

Ob./Flex *Flex tube* *ff*

B. Cl. *p*

Bsn. *p*

Hn. *'brassy'* *ff*

C Tpt. *'brassy'* *ff*

Tbn. *'brassy'* *ff*

Perc. *Bass drum* *damp!* *ff* *Wood-block* *sub. p* *Tom* *ff*

Gr. *prepare!* *(bend outside fretboard)* *sfz*

**C**  $\text{♩} = 90$

Ch. *Wei..* *nen,* *la* *la*

Vln. I *mp*

Vln. II *senza sord.* *mp*

Vla. *mp*

Vc. *senza sord.* *mp*

Cb. *damp!* *ff* *mp* *ff*

89

Fl.

Ob./Flex

B. Cl. *bisbigl.*  
1 2 (sim.)  
*p*

Bsn. *bisbigl.*  
1 2 (sim.)  
*p*

89

Hn. *ff*

C Tpt. *ff*

Tbn. *ff*

89

Perc. *Thunder sheet*  
*ff* Tom (finger tapping)  
*mp*<sup>3</sup> <sup>3</sup> <sup>3</sup> <sup>3</sup> <sup>3</sup> <sup>3</sup> <sup>3</sup> <sup>3</sup>

Gtr. ⑥ *mf* ③ 12th fret---  
*(mf)*

89 *p* (white noise - high)  
z

Ch. *p* (white noise - middle)  
s

89

Vln. I *ORD*  
pizz. secco  
*mp*

Vln. II *molto vibr. (slow)*  
*p*

Vla. *ORD*  
*molto vibr. (slow)*  
*p* *ORD*  
pizz. secco  
*mp*

Vc. *ORD*  
*molto vibr. (slow)*  
*p*

Cb. *molto vibr. (slow)*  
*p* *ff*

94

Fl. *ff* (approx. pitch) *p*

Ob./Flex *(p)*

B. Cl. keyclicks RH *(mf)*

Bsn. keyclicks RH *(mf)*

Hn. *ff*

C Tpt. *ff*

Tbn. *ff*

Perc. 94 (with stick) *ff* Thunder sheet *ff*

Gtr.  $\oplus$  LH sempre tap (nail) on the bridge *p*

Ch. 94 *p* (white noise - middle) kh(y) *p* (white noise - low) f(u)

Vln. I arco *p*

Vln. II ord. *p* II clb *mp*

Vla. arco *p* II clb *mp*

Vc. ord. *p* III clb *mp*

Cb. *ff* *ff*

99

Fl. *mp* tongue ram

Ob./Flex *ff*

B. Cl. *p*

Bsn. *p*

Hn. *ff* *mp* tongue ram

C. Tpt. *ff*

Tbn. *ff* *mp* tongue ram

Perc. Bass drum *ff* Wood-block *sub. p* Thunder sheet *ff*

Gtr. *sfz* *sfz* rasg. LH prepare! (plectrum)

Ch. *p* cri

Vln. I *p* II (♯E)

Vln. II *p* III ord.

Vla. *(mf)* ASP clb → ST IV (mf) LH

Vc. *p* SP ord. IV (7th)

Cb. *ff* IV (♯E) *mp* *ff*

This page of a musical score covers measures 104 to 108. The score is arranged in a standard orchestral format with multiple staves for each instrument family. The key signature has one sharp (F#) and the time signature is 4/4. The score includes various performance instructions such as dynamics (ff, p, mp, sfz, pp), articulation (accents, slurs), and specific techniques (e.g., 'ord. détaché', 'scrape (plectrum)', 'open slap').

**Flute (Fl.):** Measure 104 starts with a *ff* dynamic. Measure 108 features a *p* dynamic with a **x3** repeat sign.

**Oboe/Flexible Horn (Ob./Flex.):** Measure 108 features a *ff* dynamic with a **x3** repeat sign.

**Bass Clarinet (B. Cl.):** Measure 108 features an *sfz* dynamic with a **x3** repeat sign and the instruction "open slap".

**Bassoon (Bsn.):** Measure 108 features a *(mf)* dynamic with a **x3** repeat sign.

**Horn (Hn.):** Measure 104 includes a triplet and a *ff* dynamic. Measure 108 features a *ff* dynamic with a **x3** repeat sign.

**Trumpet (C Tpt.):** Measure 108 features a *ff* dynamic with a **x3** repeat sign.

**Trombone (Tbn.):** Measure 108 features a *ff* dynamic with a **x3** repeat sign.

**Percussion (Perc.):** Measure 104 includes a *ff* dynamic for the Tom. Measure 108 includes *ff* for Bass drum, *mp* for Wood-block, and *p* for Crotales (stick).

**Guitar (Gtr.):** Measure 104 includes a *(mf)* dynamic for "scrape (plectrum)" with ST and ASP markings. Measure 108 includes a *sfz* dynamic for "ord. (plectrum)" with a RH marking.

**Chamber Music (Ch.):** Measures 104-108 feature *pp* dynamics and *mm* markings.

**Violin I (Vln. I):** Measure 108 features a *mp* dynamic with a **x3** repeat sign and a **SP** marking.

**Violin II (Vln. II):** Measure 108 features a *mp* dynamic with a **x3** repeat sign and **SP** markings.

**Viola (Vla.):** Measure 108 features a *pp* dynamic with a **x3** repeat sign and "ord. détaché" markings.

**Violoncello (Vc.):** Measure 108 features a *pp* dynamic with a **x3** repeat sign and "ORD IV détaché" markings.

**Double Bass (Cb.):** Measure 108 features a *ff* dynamic with a **x3** repeat sign.

109

Fl. *ff* keyclicks RH (*mf*) *p* 3

Ob./Flex *ff*

B. Cl. *p* keyclicks RH (*mf*)

Bsn. keyclicks LH (*mf*)

Hn. *ff* *ff*

C Tpt. *ff* *ff* air (noise) (*mf*)

Tbn. *ff* *ff*

Perc. 109 Wood-block *ff* Crotales Tom Bass drum *ff* Wood-block *mp*

Gtr. *sfz* RH drum roll *mf*

Ch. *p* a - u - a - u - a *p* a - u - a - u - a *p* ma *p* u - a - u - a - u *p* ma *p* a - u - a - u - a *p* ma *p* u - a - u - a - u *p* u - a - u - a - u

Vln. I 109 II (#) *mp* (SP)

Vln. II III (#) *mp* (SP)

Vla. II (#) *mp* (SP)

Vc. (ORD) *p* IV (SP) *mp*

Cb. *ff* *ff* (ASP) *mp*

**D**

114

Fl. *p*

Ob./Flex *ff* *ff*

B. Cl. *p*

Bsn. *p* flap tongue *p*

Hn. *ff* *ff* *ff*

C Tpt. *ff* *ff* *ff* ord.

Tbn. *ff* *ff* *ff*

Perc. *ff* Thunder sheet Bass drum Wood-block *ff* *sub. p*

Gtr. *f* tap LH tap RH *sfz*

114

Ch. *p* *p* *p* ma ma ma la la

114

Vln. I *mp* ASP

Vln. II

Vla. *mp* ASP

Vc. *mp* ST

Cb. *ff* *ff* *ff* *mp* IV ORD

**D**



119

Fl. *ff*

Ob./Flex

B. Cl. *p* bisbigl. 1 2 (sim.)

Bsn. *p* bisbigl. 1 2 (sim.)

Hn. *ff*

C. Tpt. *ff*

Tbn. *ff*

Perc. *ff* Tom Thunder sheet Tom (finger tapping) (with stick) *mp*

Gtr. *mf* ⑥ ③ ① 12th fret (mf)

Ch. *p* (white noise - high) z (white noise - middle) s s

Vln. I *mp* ORD II pizz.

Vln. II *p* ORD molto vibr. (slow)

Vla. *p* ORD molto vibr. (slow) II pizz. *mp*

Vc. *p* ORD molto vibr. (slow)

Cb. *ff* *p* ord. *ff*



129

Fl. *tongue ram* *mp* *ff*

Ob./Flex *ff*

B. Cl. *p*

Bsn. *p*

Hn. *ff* *tongue ram* *mp* *ff* *ord.*

C. Tpt. *ff* *ff* *ff*

Tbn. *ff* *tongue ram* *mp* *ff* *ff*

Perc. *Thunder sheet* *ff* *Tom* *ff* *Bass drum* *ff*

Gtr. *prepare! (plectrum)* *ST* *scrape (plectrum)* *ASP* *ST* *(mf)*

Ch. *cri* *pp* *mm* *pp* *mm*

Vln. I *↑*

Vln. II *↑*

Vla. *ASP* *ST* *ASP* *ORD* *(mf) ⊕ LH* *ord. détaché* *pp*

Vc. *ORD* *IV détaché* *pp*

Cb. *ff* *ff* *ff*

Fl. *p* *ff* keyclicks RH (*mf*) *p* 3

Ob./Flex

B. Cl. open slap *sfz* *p*

Bsn. (*mf*) keyclicks LH (*mf*) flap tongue *p*

Hn. *ff* *ff* *ff*

C Tpt. *ff* *ff* *ff*

Tbn. *ff* *ff* *ff*

Perc. 134 Wood-block *mp* Crotales *p* Tom *ff* Bass drum *ff* Wood-block *ff* Thunder sheet

Gtr. ord. (plectrum) *sfz* RH tap LH (6) tap RH (3) *f*

134 *p* a - u - a - u - a a - u - a - u - a ma

Ch. *p* u - a - u - a - u - a ma

*p* a - u - a - u - a ma

*p* u - a - u - a - u

*p* u - a - u - a - u

Vln. I 134 I (SP) *mp*

Vln. II II (SP) III *mp*

Vla. I (SP) *mp*

Vc. I (ST) *mp* (ORD) *p* IV (SP) *mp*

Cb. *ff* *ff* *ff*

**E**

139

Fl. *(p)* *ff* *ff*

Ob./Flex *ff*

B. Cl. *p*

Bsn. *p*

Hn. *ff* *ff* *ff*

C. Tpt. *ff* *ff* *ff*

Tbn. *ff* *ff* *ff*

Perc. Bass drum *ff* Wood-block *sub. p* Tom *ff* Thunder sheet *mp* Tom (finger tapping) *ff* (with stick) Thunder sheet *ff*

Gtr. *sfz* *(mf)* 12th fret

139

**E**

Ch. *p* la la

Vln. I *mp* *mp* ASP I *ORD* II *pizz.*

Vln. II *mp* *mp* ASP I *ORD* II *pizz.*

Vla. *mp* *mp* ASP I *ORD* II *pizz.*

Vc. *mp* *mp* ST

Cb. *ff* *mp* *ff* *ff* *ff* *ff*

144

Fl. *tongue ram*  
*mp* *ff* *p* *ff*

Ob./Flex *ff* *ff* *ff*

B. Cl. *p* *sfz* *open slap*

Bsn. *p* *(mf)*

Hn. *ff* *ff* *mp* *ff* *ff*

C Tpt. *ff* *ff* *ff* *ff*

Tbn. *ff* *ff* *mp* *ff* *ff*

Perc. *Bass drum* *Wood-block* *Thunder sheet* *Tom* *Bass drum* *Wood-block* *Crotales* *Tom* *Bass drum* *Thunder sheet*  
*ff* *p* *ff* *ff* *p* *ff*

Gtr. *sempre* *tap (nail) on the bridge* *p* *sfz* *RH*

Ch. *p* *cri* *p* *cri*

Vln. I *arco* *mp* *ff* *mp* *SP*

Vln. II *clb* *mp* *ord.* *mp* *SP*

Vla. *clb* *mp* *(ASP)* *clb* *IV* *(mf)* *LH* *ST* *SP* *ord.* *mp*

Vc. *clb* *mp* *SP* *ord.* *IV (7th)* *mp* *ST* *mp*

Cb. *ff* *ff* *ff* *ff* *ff* *ff*

**F**

149

Fl. *ff sempre*

Ob./Flex *ff* *ff sempre*

B. Cl.

Bsn. *p* *ff sempre* *multiph. (wide spectrum)*

Hn. *ff sempre*

C. Tpt. *ff sempre*

Tbn. *ff sempre*

Perc. *ff sempre* *Bass drum* *Tom* *Thunder sheet*

Gtr. *ff* *tap LH* *tap RH*

**F**

Ch.

Vln. I

Vln. II

Vla. *high bowpressure* *III (distorted)* *IV* *ff sempre*

Vc.

Cb. *ff sempre*

This musical score page covers measures 154 through 158. The instruments and their parts are as follows:

- Flute (Fl.):** Measures 154-155 are silent. In measure 156, it plays a sustained note with a *ff* dynamic. In measure 157, it plays a sustained note with a *ff* dynamic. In measure 158, it plays a sustained note with a *ff* dynamic.
- Oboe (Ob./Flex.):** Measures 154-155 are silent. In measure 156, it plays a sustained note with a *ff* dynamic and a "multiph. (wide spectrum)" effect. In measure 157, it plays a sustained note with a *ff* dynamic and a "multiph. (wide spectrum)" effect. In measure 158, it plays a sustained note with a *ff* dynamic.
- Bass Clarinet (B. Cl.):** Measures 154-155 are silent. In measure 156, it plays a sustained note with a *ff* dynamic and a "multiph. (wide spectrum)" effect. In measure 157, it plays a sustained note with a *ff* dynamic and a "multiph. (wide spectrum)" effect. In measure 158, it plays a sustained note with a *ff* dynamic.
- Bassoon (Bsn.):** Measures 154-155 are silent. In measure 156, it plays a sustained note with a *ff* dynamic and a "multiph. (wide spectrum)" effect. In measure 157, it plays a sustained note with a *ff* dynamic and a "multiph. (wide spectrum)" effect. In measure 158, it plays a sustained note with a *ff* dynamic.
- Horn (Hn.):** Measures 154-158: Active part with various notes and dynamics.
- Trumpet (C Tpt.):** Measures 154-158: Active part with various notes and dynamics.
- Trombone (Tbn.):** Measures 154-158: Active part with various notes and dynamics.
- Percussion (Perc.):** Measures 154-158: Active part with various notes and dynamics.
- Guitar (Gtr.):** Measures 154-158: Silent.
- Chorus (Ch.):** Measures 154-158: Silent.
- Violin I (Vln. I):** Measures 154-155 are silent. In measure 156, it plays a sustained note with a *ff* dynamic and "high bowpressure III (distorted) IV (distorted)". In measure 157, it plays a sustained note with a *ff* dynamic and "high bowpressure III (distorted) IV (distorted)". In measure 158, it plays a sustained note with a *ff* dynamic and "high bowpressure III (distorted) IV (distorted)".
- Violin II (Vln. II):** Measures 154-155 are silent. In measure 156, it plays a sustained note with a *ff* dynamic and "high bowpressure III (distorted) IV (distorted)". In measure 157, it plays a sustained note with a *ff* dynamic and "high bowpressure III (distorted) IV (distorted)". In measure 158, it plays a sustained note with a *ff* dynamic and "high bowpressure III (distorted) IV (distorted)".
- Viola (Vla.):** Measures 154-158: Active part with various notes and dynamics.
- Violoncello (Vc.):** Measures 154-155 are silent. In measure 156, it plays a sustained note with a *ff* dynamic and "high bowpressure III (distorted) IV (distorted)". In measure 157, it plays a sustained note with a *ff* dynamic and "high bowpressure III (distorted) IV (distorted)". In measure 158, it plays a sustained note with a *ff* dynamic and "high bowpressure III (distorted) IV (distorted)".
- Contra Bass (Cb.):** Measures 154-158: Active part with various notes and dynamics.



**G** ♩ = 70

159

Fl.

Ob./Flex

B. Cl.

Bsn.

Hn.

C Tpt.

Tbn.

Perc.

Gtr.

159

Ch.

*mp*

must still fall drop - ping,

must still, still fall drop - ping, still fall drop - ping, must still,

must still, still fall, fall drop - ing, fall drop - ping, must

must still fall drop - ping, still fall drop - ping, drop - ping, must

159

Vln. I

Vln. II

Vla.

Vc.

Cb.

con sord.

con sord.

con sord.

con sord.

con sord.

SI

*pp* sempre

163

tongue ram  
p sempre

Fl.

Ob./Flex

B. Cl.

Bsn.

163

Hn.

C Tpt.

Tbn.

163

Perc.

Gr.

163

dim. poco a poco al fine

must still fall drop - ping,

dim. poco a poco al fine

still fall drop - ping, still fall drop - ping, must mm fall

dim. poco a poco al fine

still, still fall, fall drop - ping, fall drop - ping, must still, still mm

dim. poco a poco al fine

still fall drop - ping, still fall drop - ping, drop - ping, drop - ping, must still fall

163

Vln. I

Vln. II

Vla.

Vc.

Cb.

167

Fl.

Ob./Flex

B. Cl.

Bsn.

167

Hn.

C Tpt.

Tbn.

167

Perc.

Gtr.

Crotales (bowed)

Bass drum *secco*

*pp*

*ppp*

167

Ch.

*mm* still fall drop ping, *mm* fall

drop - ping, *mm* fall drop - ping, *mm* fall

drop - ping, *mm* must still, still *mm* *mm*

*mm* still fall *mm* must still *mm* *mm*

*p* *mm* fall

drop - ping, *mm* fall

*p* *mm*

167

Vln. I

Vln. II

Vla.

Vc.

Cb.

III (SP) *sempre* *pp* *sempre*

III (SP) *sempre* *pp* *sempre*

I (SP) *sempre* *pp* *sempre*

(ST) (ASP) (ST)

*mp*

♩ = 65

Fl. *(171)*

Ob./Flex

B. Cl.

Bsn.

Hn. *(171)*

C Tpt.

Tbn.

Perc. *(171)* Crotales (bowed) *pp*

Gtr.

♩ = 65

*(171)*

drop - ping, must *mm*

drop - ping, *mm* still *mm* *mm*

*mm* fall *mm* *mm*

*mm* *mm* drop - ping. *mm*

*(171)*

Vln. I

Vln. II

Vla.

Vc. *mp* (ST) (ASP) (ST) *mp* (ST) (ASP) (ST) *mp*

Cb.

175

Fl.

Ob./Flex

B. Cl.

Bsn.

175

Hn.

C Tpt.

Tbn.

175

Perc.

Bass drum

Gtr.

175

Ch.

must mm fall mm

mm fall mm mm

fall mm mm

mm mm

175

Vln. I

Vln. II

Vla.

Vc.

Cb.

II (♯5)

IV (♯)

IV (♯)



184

Fl. *pp*

Ob./Flex

B. Cl. spectral multiph. (very soft, fragile and unstable) *ppp*

Bsn.

Hn.

C. Tpt. *pp*

Tbn. *pp*

Perc. 3

Gtr. 4 6

Ch. *mm*

Vln. I *ppp*

Vln. II *ppp*

Vla. *ppp*

Vc. *ppp*

Cb. *ppp*

Detailed description: This page of a musical score covers measures 184 through 188. The score is arranged in systems for various instruments. The Flute (Fl.) part begins in measure 184 with a series of eighth notes, marked *pp*. The Clarinet in Bass (B. Cl.) part features a 'spectral multiph.' effect, described as 'very soft, fragile and unstable', with a *ppp* dynamic. The Percussion (Perc.) part consists of a steady eighth-note pattern with triplets. The Guitar (Gtr.) part has a sparse accompaniment with circled numbers 4 and 6. The Chimes (Ch.) part starts with a *mm* dynamic. The Violin (Vln.) and Viola (Vla.) parts include fingering numbers (I, II, III, IV) and are marked *ppp*. The Cello (Cb.) part also includes fingering numbers and is marked *ppp*. The time signature changes from 2/4 to 4/4 and back to 2/4.

190

Fl.

Ob./Flex

B. Cl.

Bsn.

whistle tones

*ppp*

190

Hn.

C Tpt.

Tbn.

190

Perc.

Gr.

190

Ch.

190

Vln. I

Vln. II

Vla.

Vc.

Cb.

*ppp*